



Machine Guard & Cover Co.

888-482-7371

machineguard.com

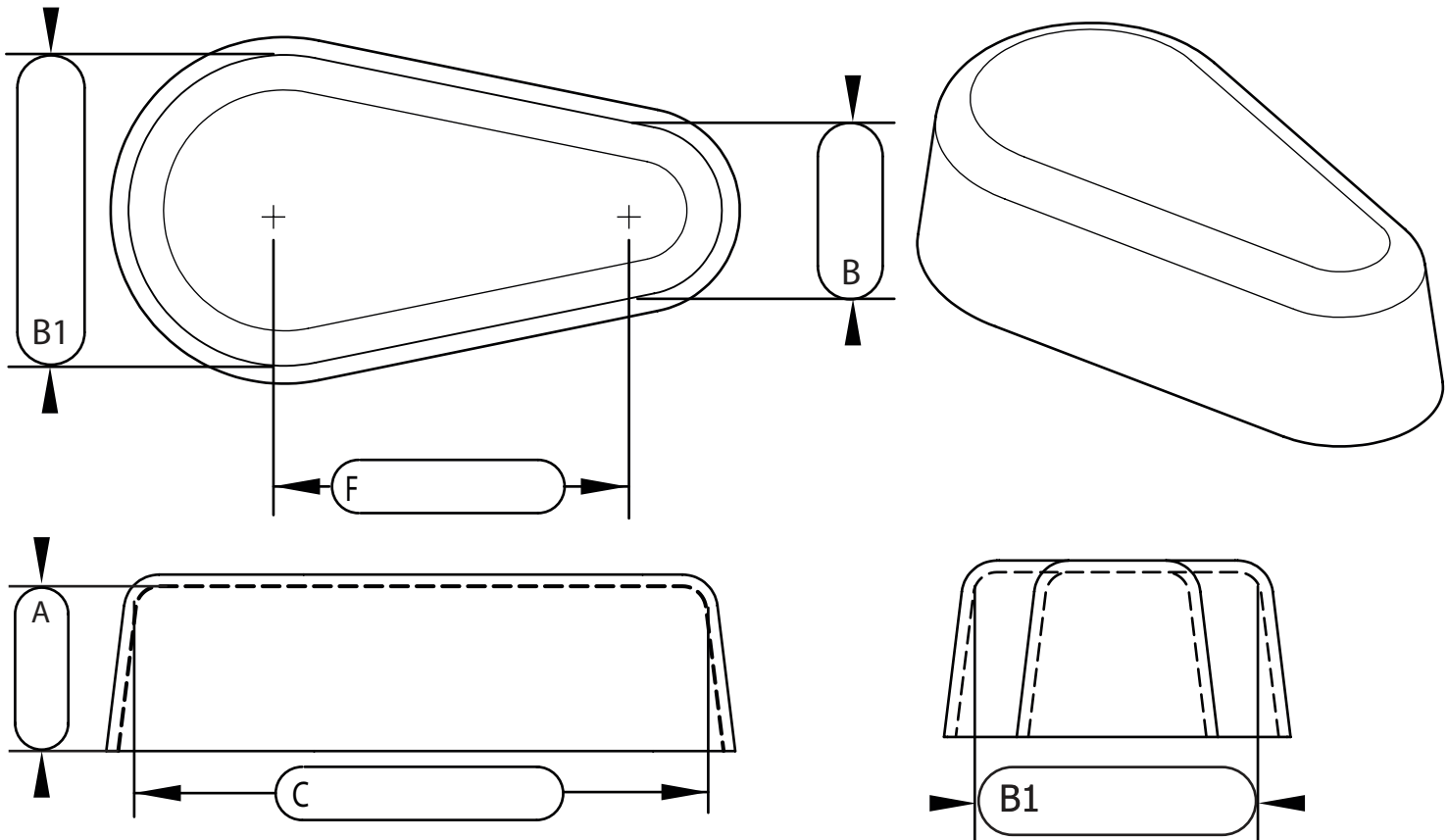
office@machineguard.com

Tapered Unflanged Guards

Final Part Dimensions

- for sizing a guard to a chain drive see page 2
- for sizing a belt drive see page 3
- for sizing an existing guard stay on this page

pg. 1/3



$$A = S + \text{Tolerance}$$

$$B = U + \text{Tolerance}$$

$$B1 = U1 + \text{Tolerance}$$

$$C = W + \text{Tolerance}$$

$$F \geq H + \text{Tolerance}$$

A = _____

B = _____

B1 = _____

C = _____

F = _____

Tolerance = _____

Machine Guard suggests adding Tolerance (gap between guard and machine) of at least 1/2" for larger parts add more.

Contact Info:

Company Name _____

Phone _____

Name _____

Email _____

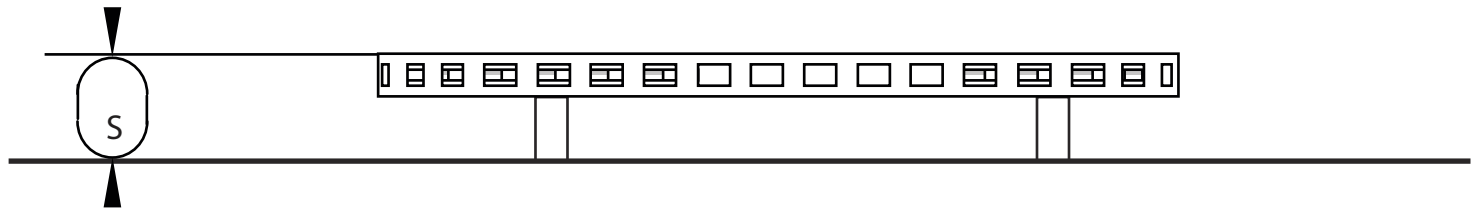


Machine Guard & Cover Co.

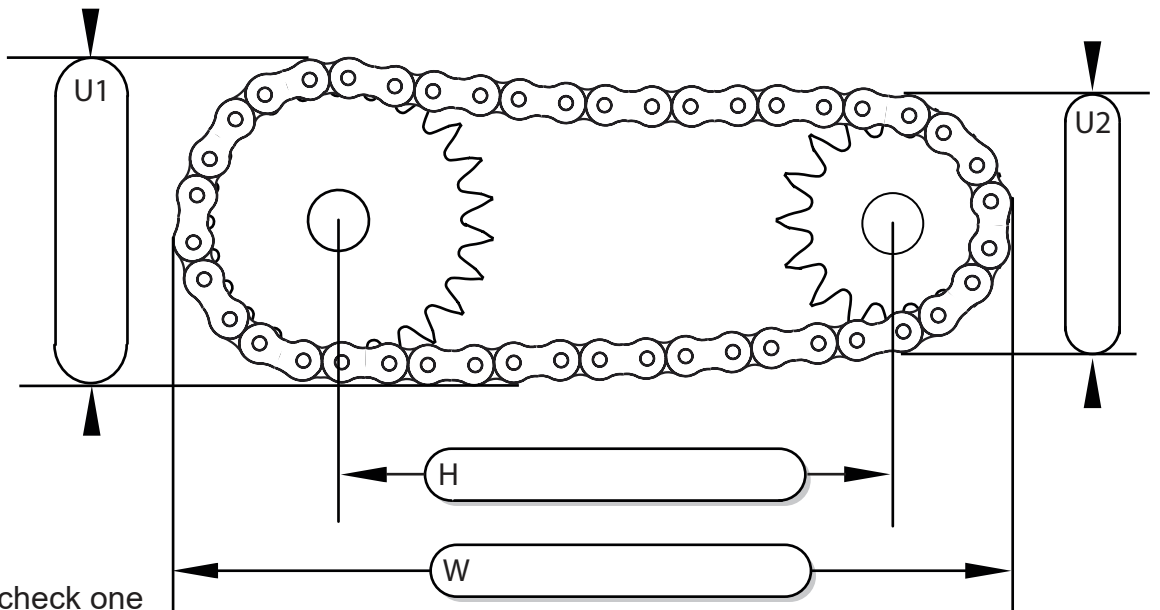
888-482-7371
machineguard.com
office@machineguard.com

Chain Drive Sizing- Standard

pg. 2/3



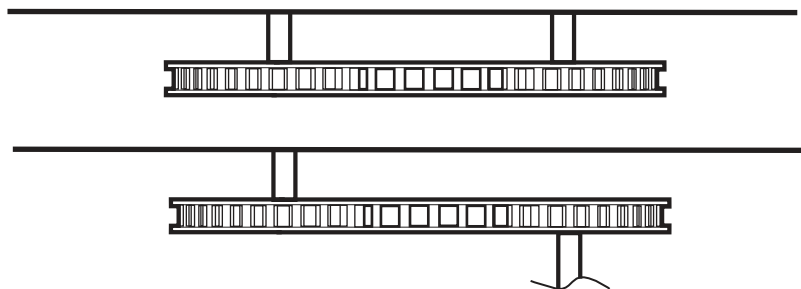
To measure with chain !
make sure
to account for
chain sag by
adding
additional
tolerance to
measurement
U and U1



Shaft variations: check one

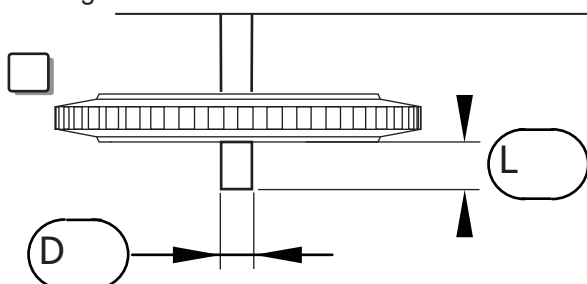
☐ -Shafts on the same side

☐ -Shafts on the opposite sides

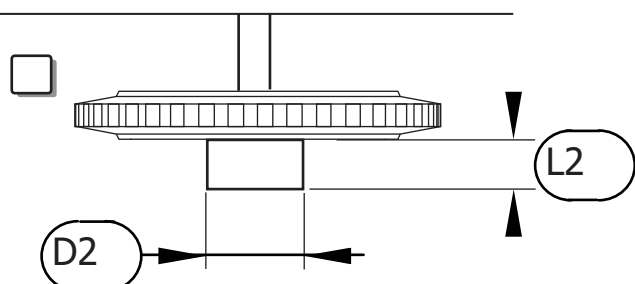


Additional measurements may be needed to be added to measurement A if you have shafts or hubs that extend past the sprockets. Other options may be available for your machine, please call to see what your best option is.

Long shaft:



Outside hub:



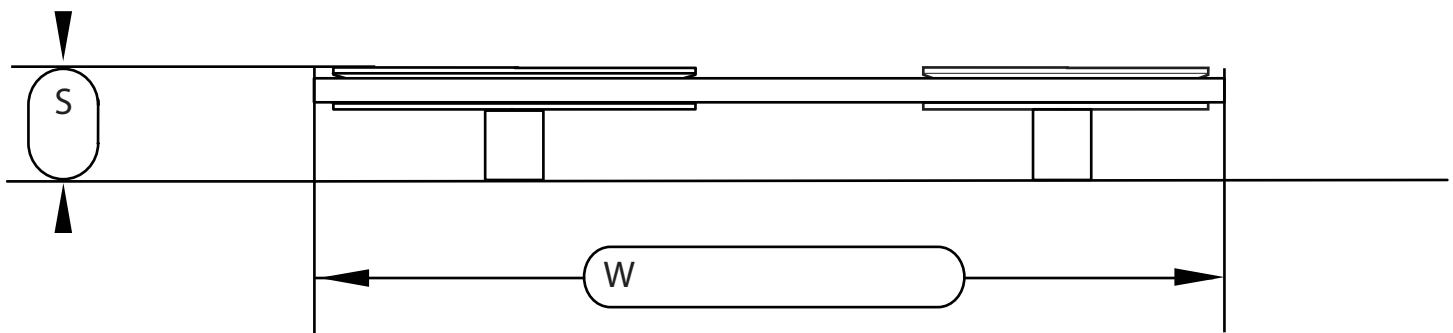
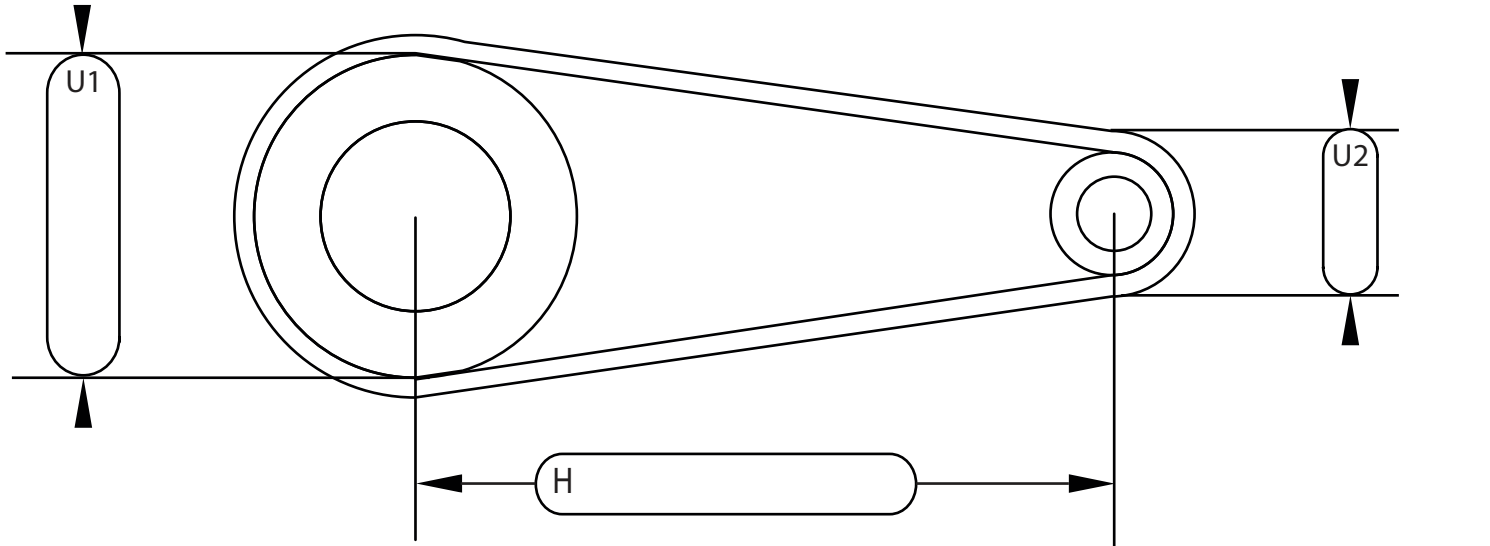


Machine Guard & Cover Co.

888-482-7371
machineguard.com
office@machineguard.com

Belt Drive Sizing- Standard

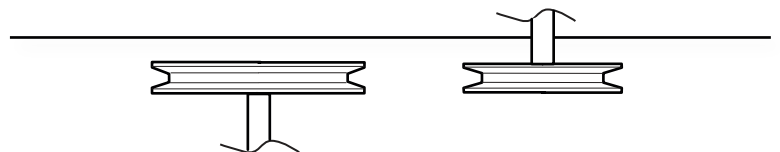
pg. 3/3



☐ -Shafts on the same side

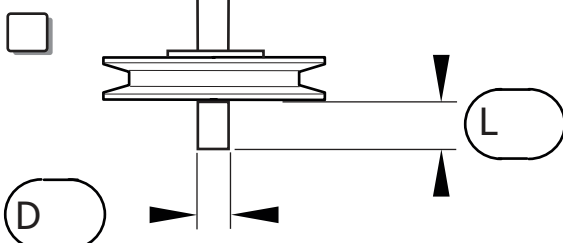


☐ -Shafts on the opposite sides



Additional measurements may be needed to be added to measurement A if you have shafts or hubs that extend past the sheaves. Other options may be available for your machine, please call to see what your best option is.

Long shaft:



Outside hub:

