



**Machine Guard & Cover Co.**

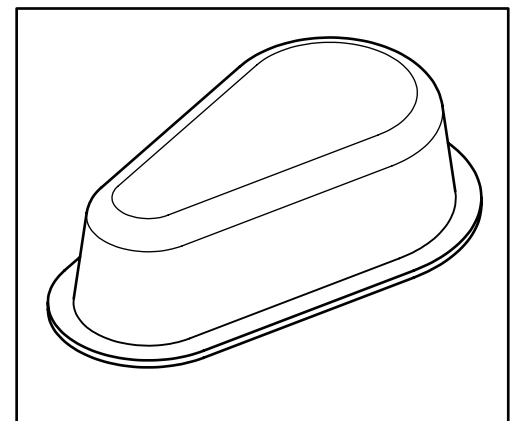
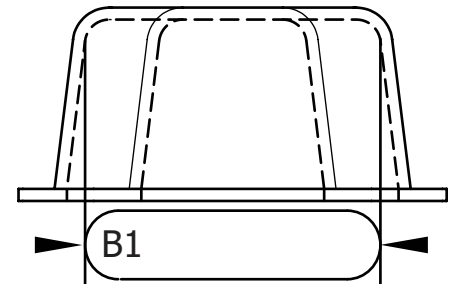
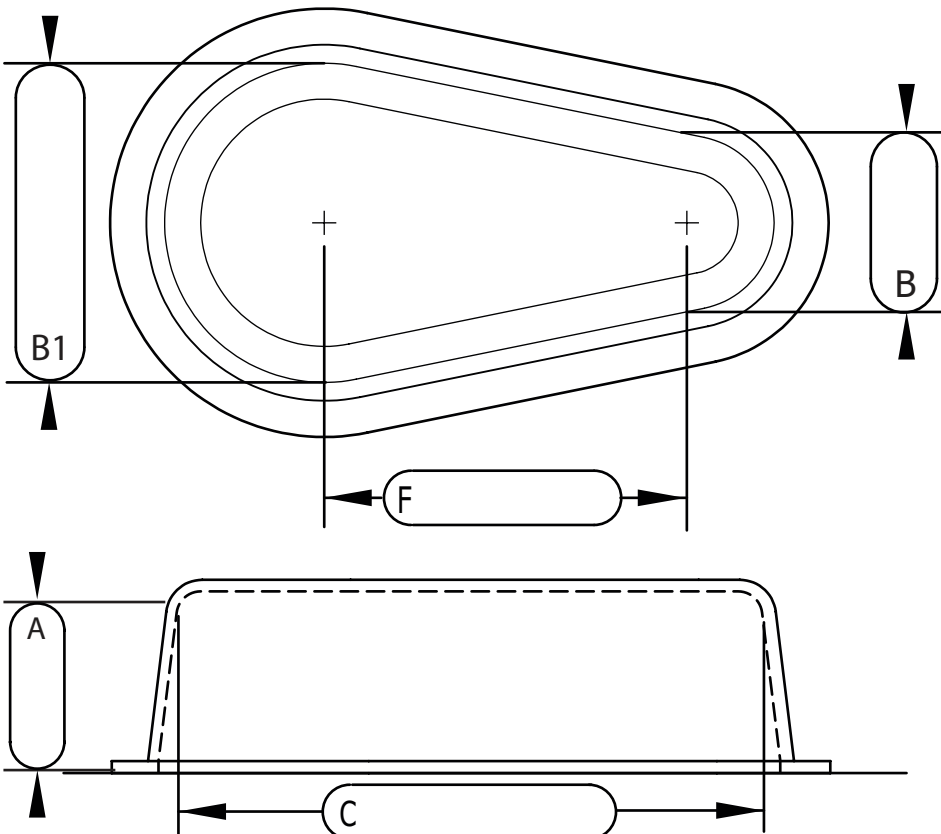
888-482-7371  
machineguard.com  
office@machineguard.com

# Tapered Flanged Guards

## Final Part Dimensions

- for sizing a guard to a chain drive see page 2
- for sizing a belt drive see page 3
- for sizing an existing guard stay on this page

pg. 1/3



A = \_\_\_\_\_  
B = \_\_\_\_\_  
B1 = \_\_\_\_\_  
C = \_\_\_\_\_  
F = \_\_\_\_\_  
Tolerance = \_\_\_\_\_

Machine Guard suggests adding Tolerance (gap between guard and machine) of at least 1/2" for larger parts add more.

$$A = S + \text{Tolerance}$$

$$B = U + \text{Tolerance}$$

$$B1 = U1 + \text{Tolerance}$$

$$C = W + \text{Tolerance}$$

$$F \geq H + \text{Tolerance}$$

## Contact Info:

Company Name \_\_\_\_\_

Phone \_\_\_\_\_

Name \_\_\_\_\_

Email \_\_\_\_\_

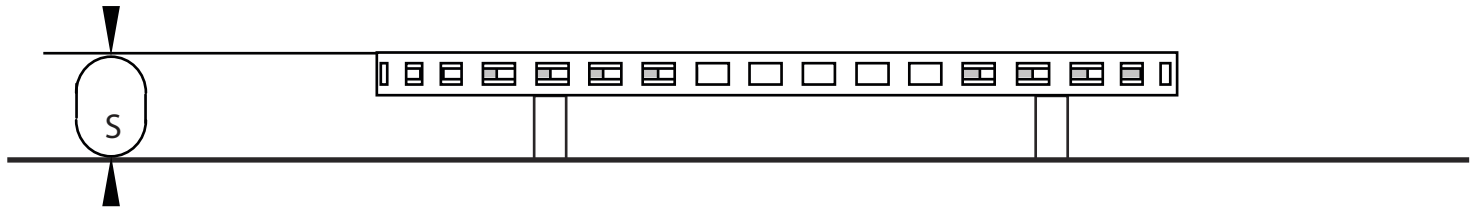


Machine Guard & Cover Co.

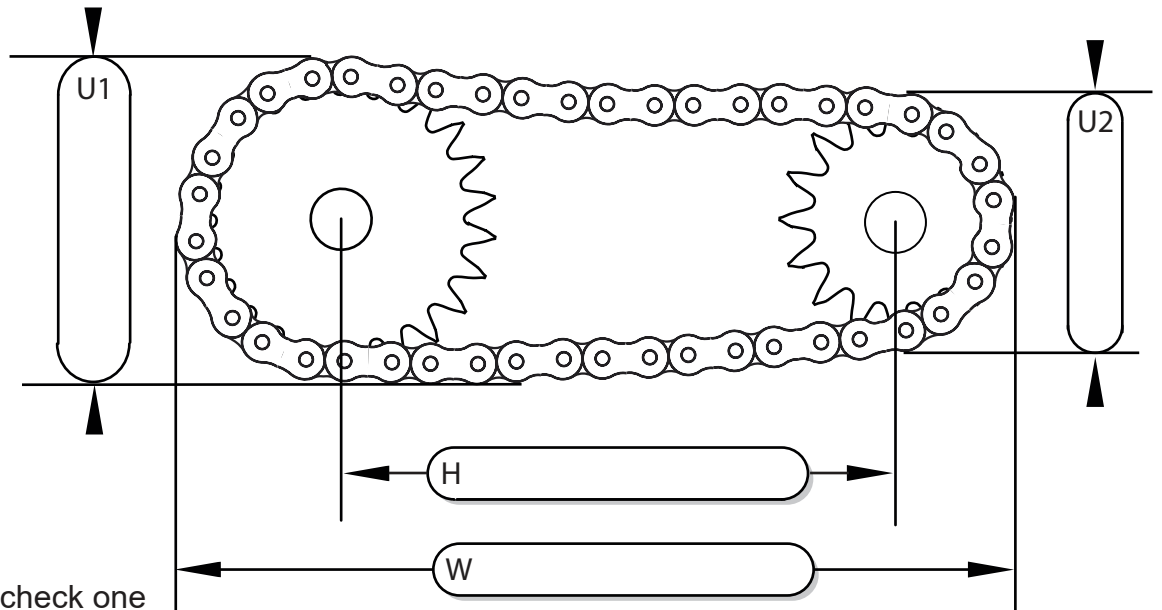
888-482-7371  
machineguard.com  
office@machineguard.com

# Chain Drive Sizing- Standard

pg. 2/3



To measure with chain make sure to account for chain sag by adding additional tolerance to measurement U and U1

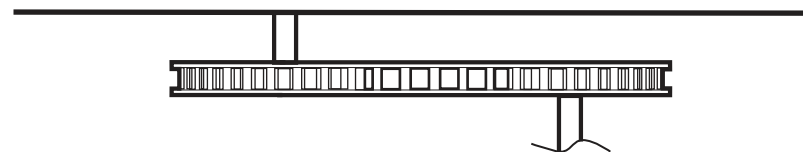


Shaft variations: check one

☐ -Shafts on the same side

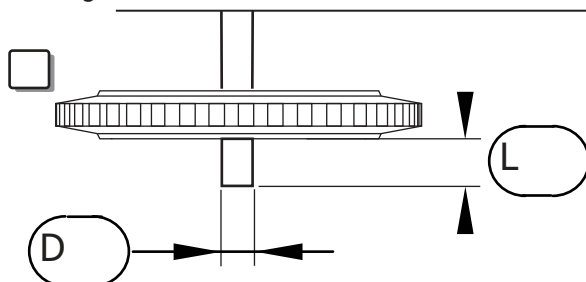


☐ -Shafts on the opposite sides

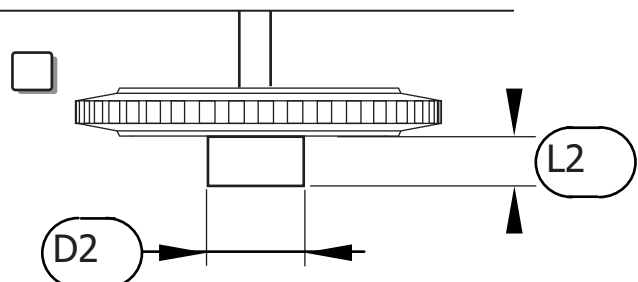


Additional measurements may be needed to be added to measurement A if you have shafts or hubs that extend past the sprockets. Other options may be available for your machine, please call to see what your best option is.

Long shaft:



Outside hub:





**Machine Guard & Cover Co.**

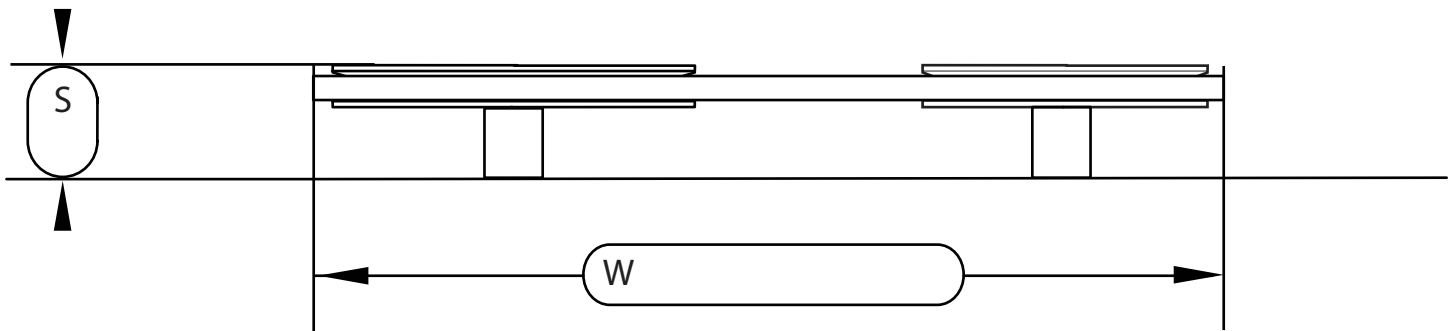
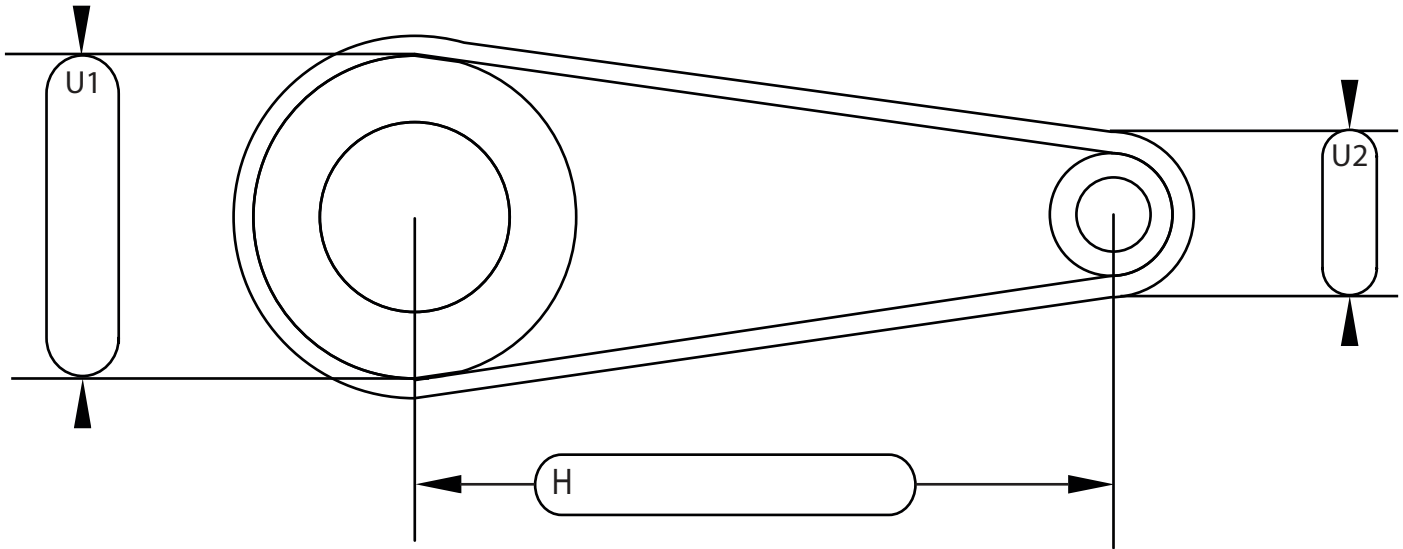
888-482-7371

machineguard.com

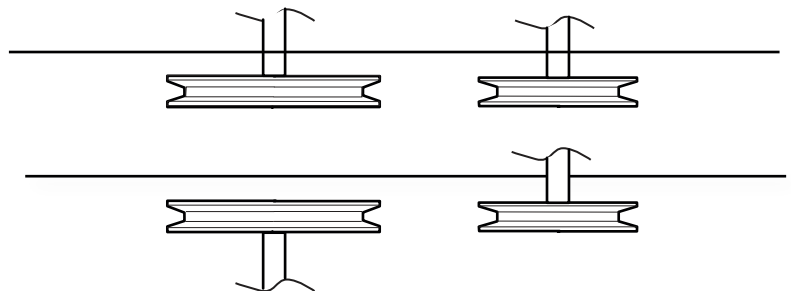
office@machineguard.com

# Belt Drive Sizing- Standard

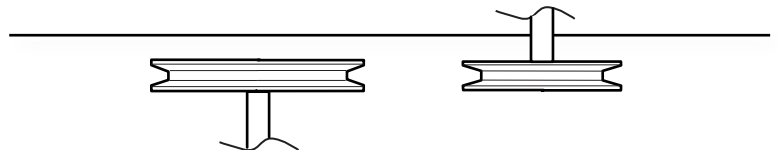
pg. 3/3



☐ -Shafts on the same side

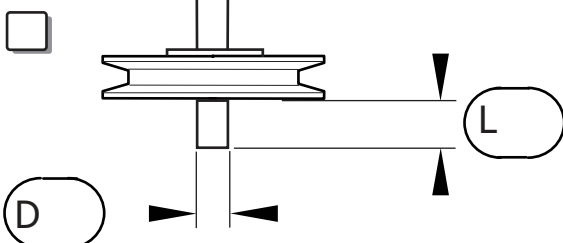


☐ -Shafts on the opposite sides



Additional measurements may be needed to be added to measurement A if you have shafts or hubs that extend past the sheaves. Other options may be available for your machine, please call to see what your best option is.

Long shaft:



Outside hub:

