



Machine Guard & Cover Co.

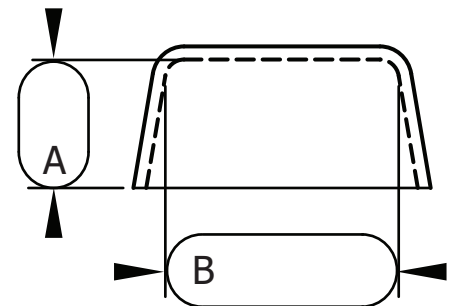
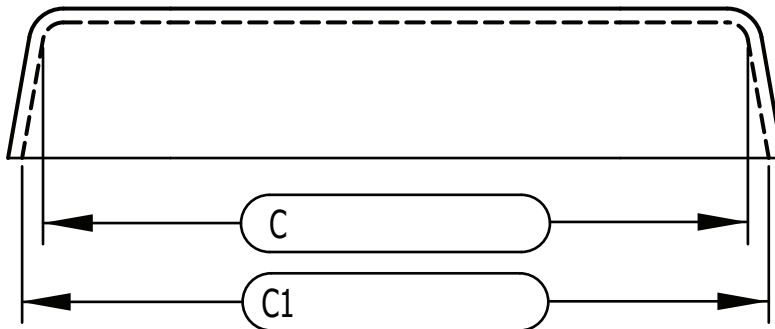
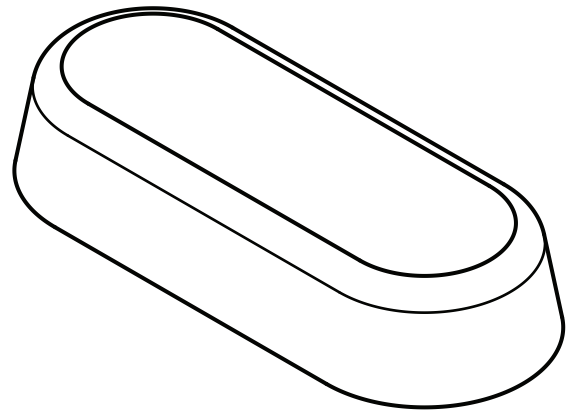
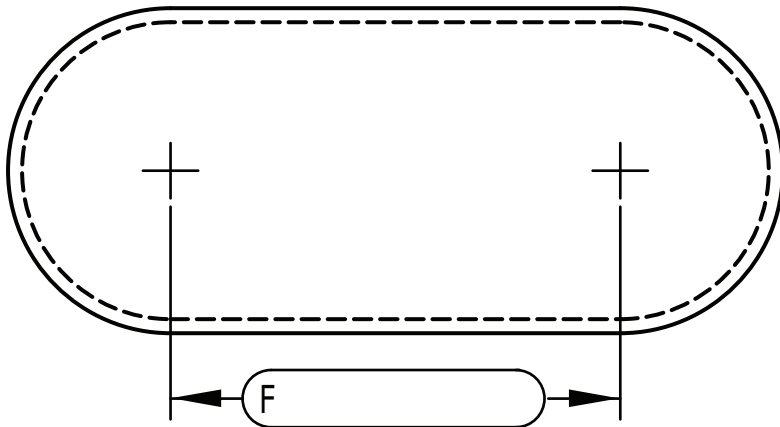
888-482-7371
machineguard.com
office@machineguard.com

Standard Unflanged Guards

pg. 1/3

Final Part Dimensions

- for sizing a guard to a chain drive see page 2
- for sizing a belt drive see page 3
- for sizing an existing guard stay on this page



Machine Guard
suggests adding
Tolerance
(gap between guard
and machine)
of at least 1/2"
for larger parts add
more.

$$A = S + \text{Tolerance}$$

$$B = U + \text{Tolerance}$$

A =

B =

C =

F =

Tolerance =

$$C = W + \text{Tolerance}$$

$$F \geq H + \text{Tolerance}$$

Contact Info:

Company Name _____

Phone _____

Name _____

Email _____



Machine Guard & Cover Co.

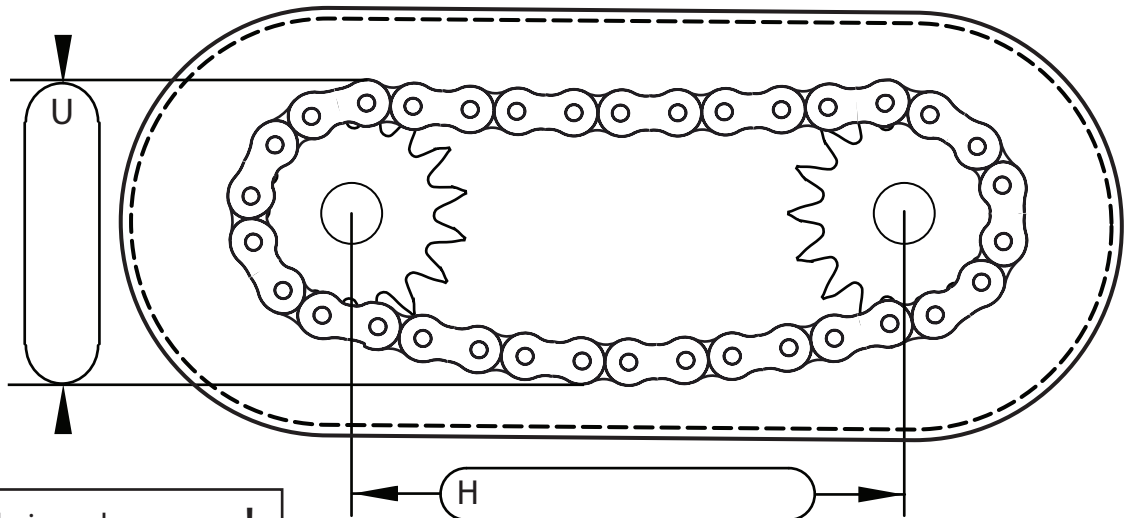
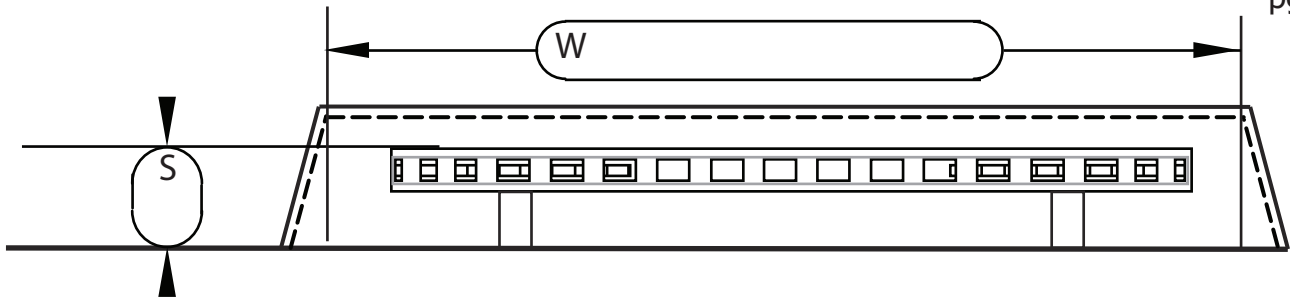
888-482-7371

machineguard.com

office@machineguard.com

Chain Drive Sizing- Standard

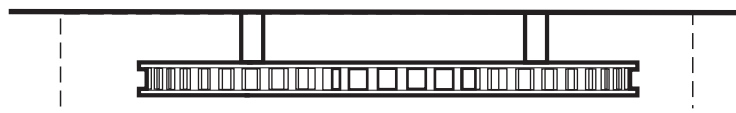
pg. 2/3



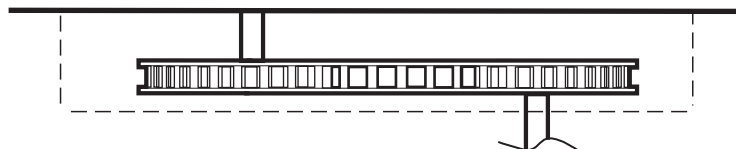
To measure with chain make sure to account for chain sag by adding additional tolerance to measurement U !

Shaft variations: check one

☐ -Shafts on the same side

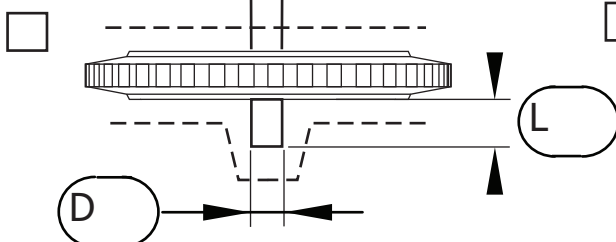


☐ -Shafts on opposite sides

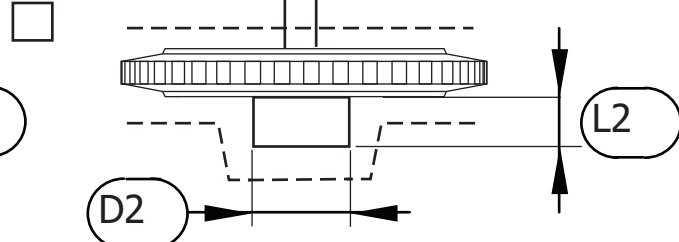


Additional measurements may be needed to be added to measurement A if you have shafts or hubs that extend past the sprockets.

Long shaft:



Outside hub:



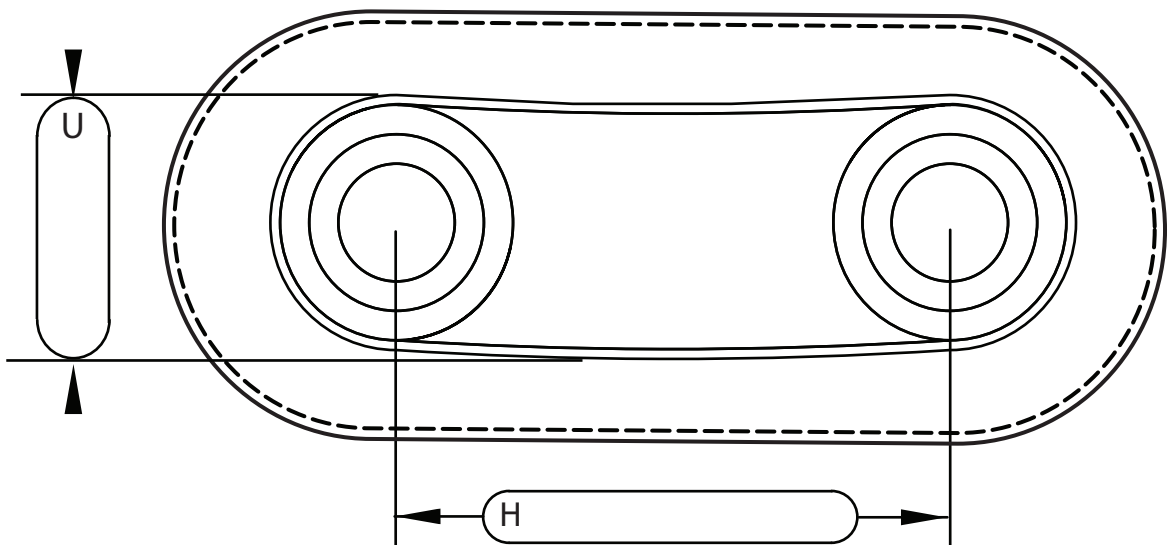
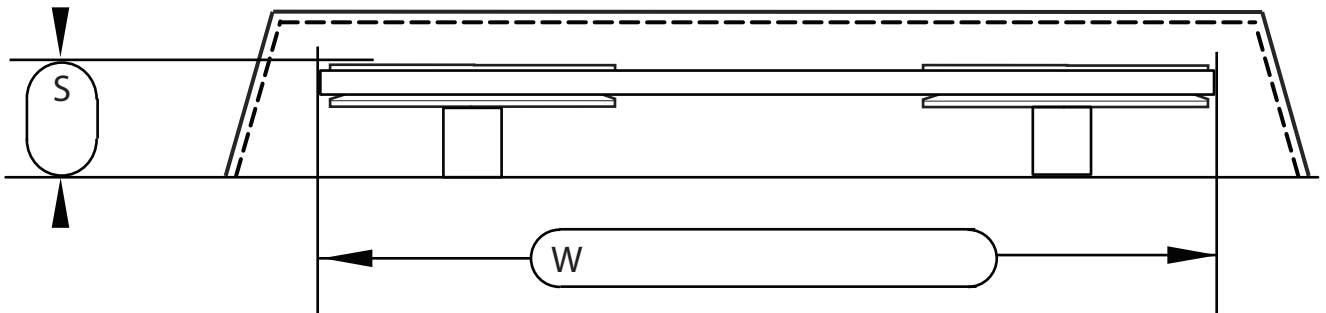


Machine Guard & Cover Co.

888-482-7371
machineguard.com
office@machineguard.com

Belt Drive Sizing- Standard

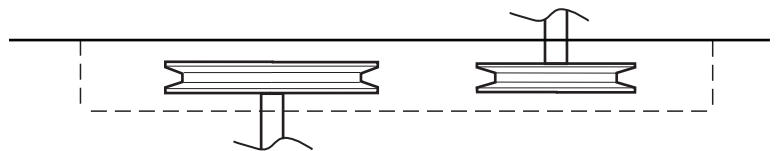
pg. 3/3



☐ -Shafts on the same side

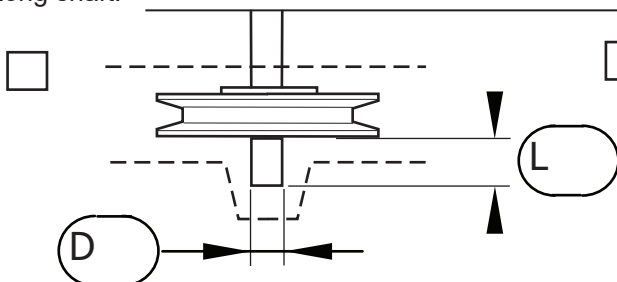


☐ -Shafts on the opposite sides



Additional measurements may be needed to be added to measurement A if you have shafts or hubs that extend past the sheaves.

Long shaft:



Outside hub:

