

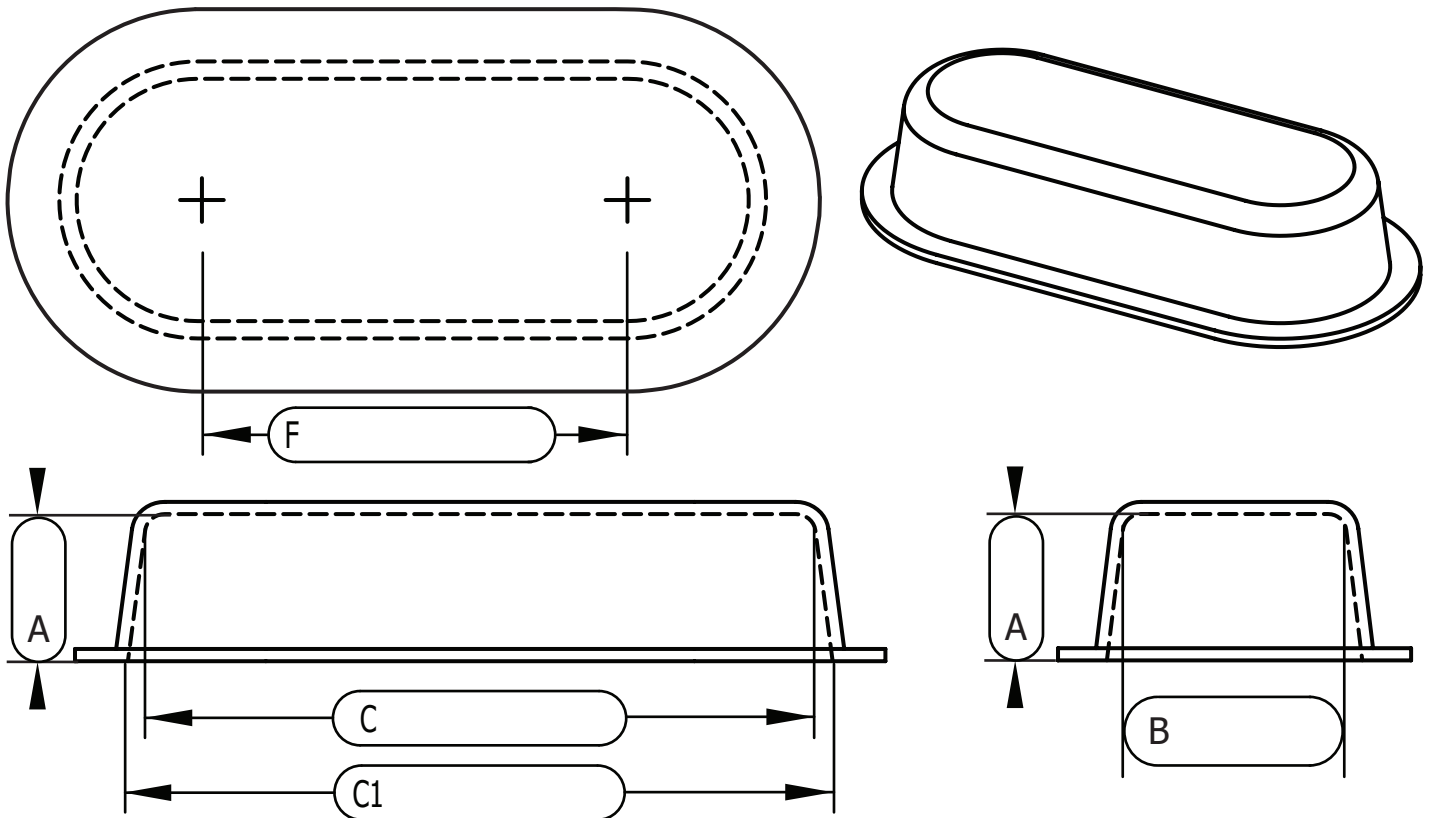


Standard Flanged Guards

Final Part Dimensions

- for sizing a guard to a chain drive see page 2
- for sizing a belt drive see page 3
- for sizing an existing guard stay on this page

pg. 1/3



Machine Guard
suggests adding
Tolerance
(gap between guard
and machine)
of at least 1/2"
for larger parts add
more.

$$A = S + \text{Tolerance}$$

$$B = U + \text{Tolerance}$$

A =

B =

C =

$$C = W + \text{Tolerance}$$

$$F \geq H + \text{Tolerance}$$

F =

Tolerance =

Contact Info:

Company Name _____

Phone _____

Name _____

Email _____

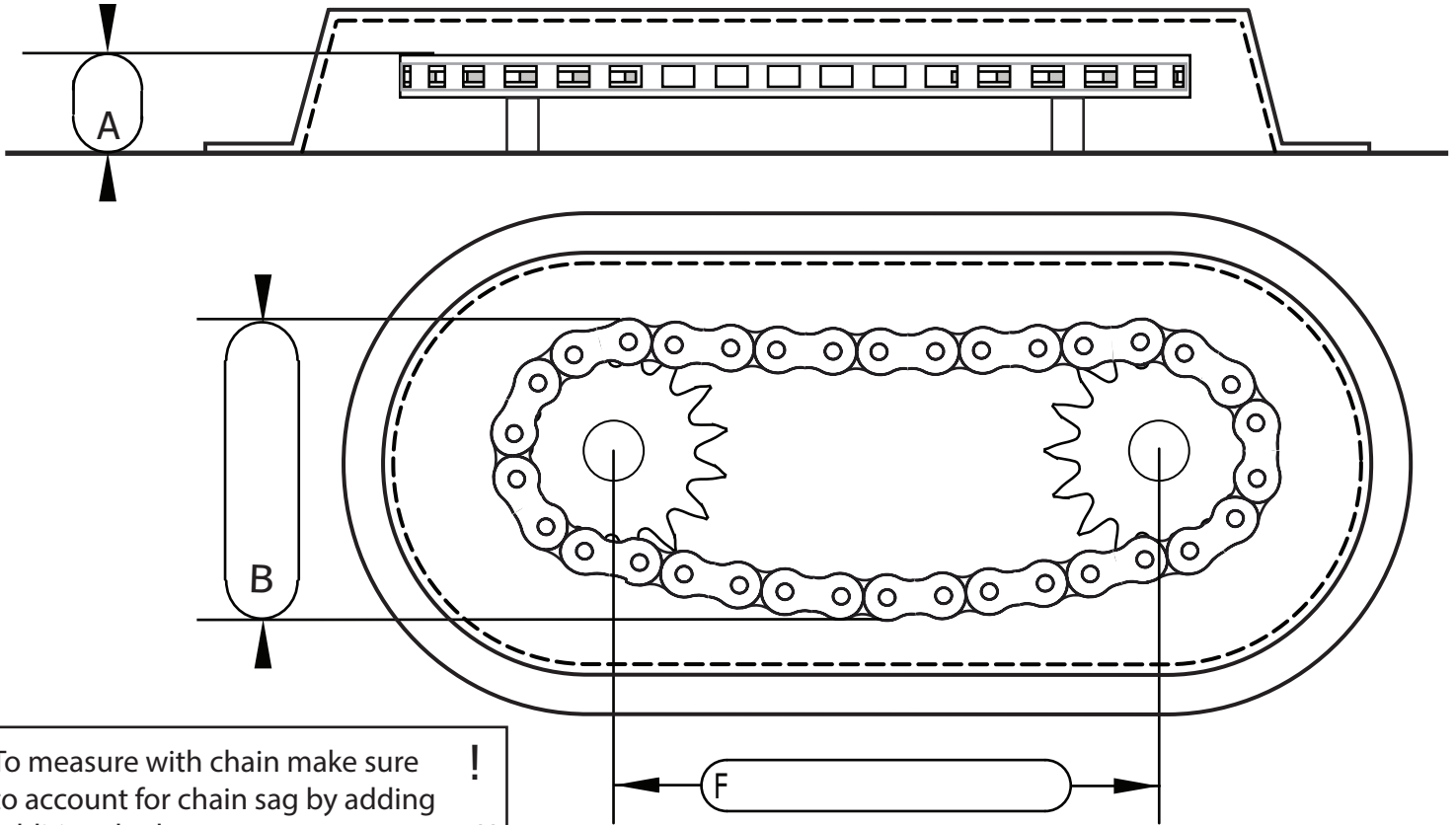


Machine Guard & Cover Co.

888-482-7371
machineguard.com
office@machineguard.com

Chain Drive Sizing- Standard

pg. 2/3

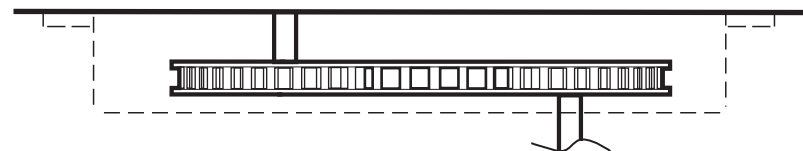


Shaft variations: check one

☐ -Shafts on the same side



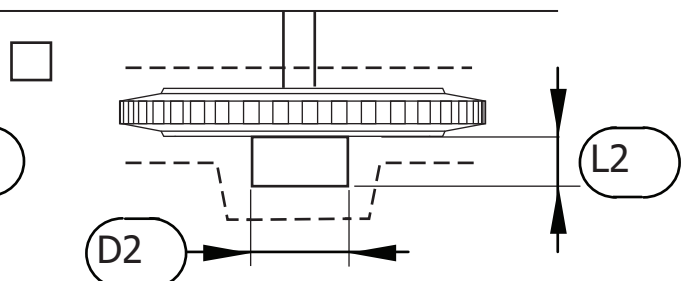
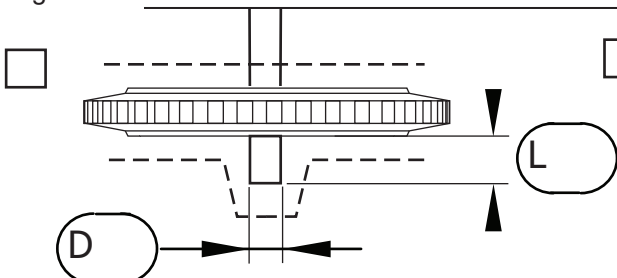
☐ -Shafts on the opposite sides



Additional measurements may be needed to be added to measurement A if you have shafts or hubs that extend past the sprockets.

Long shaft:

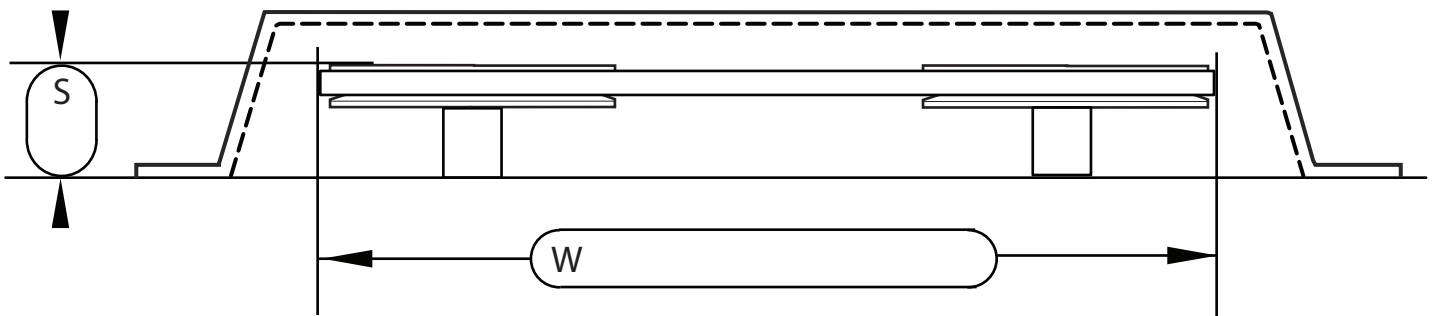
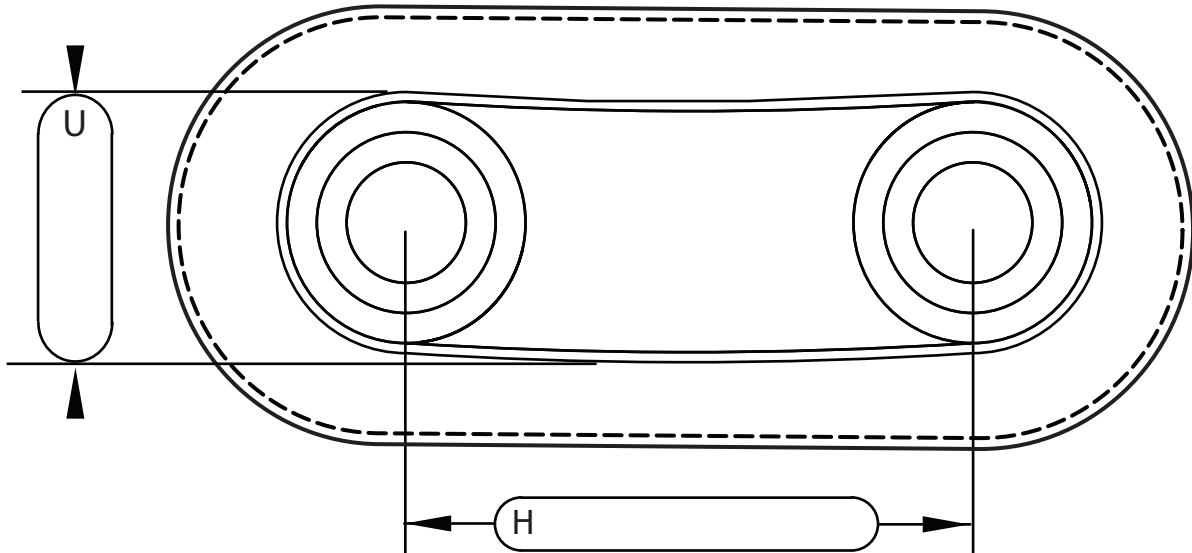
Outside hub:





Belt Drive Sizing- Standard

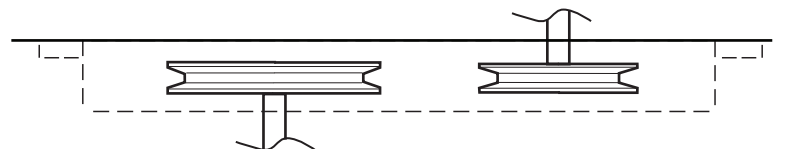
pg. 3/3



☐ -Shafts on the same side

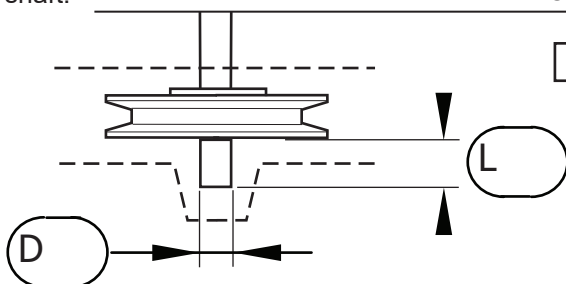


☐ -Shafts on the opposite sides



Additional measurements may be needed to be added to measurement A if you have shafts or hubs that extend past the sheaves.

Long shaft:



Outside hub:

