



Machine Guard & Cover Co.

888-482-7371

machineguard.com

office@machineguard.com

# Takeup Bearing Covers

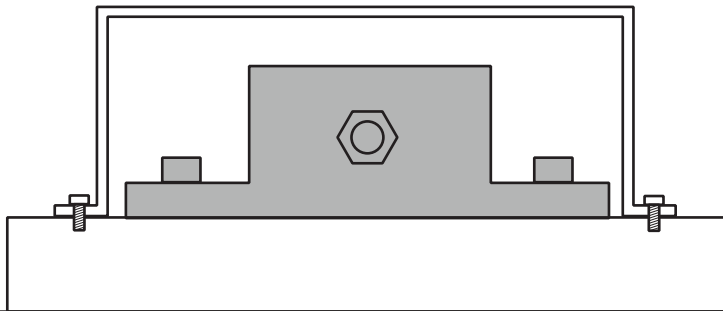
**Pg 1 Mounting types, picking a guard**

**Pg 2 Measuring from a guard**

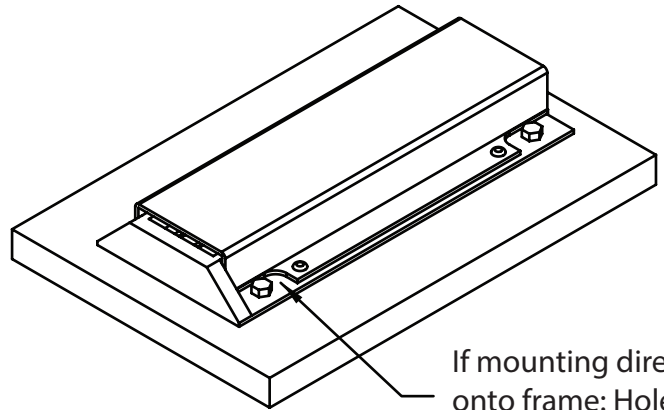
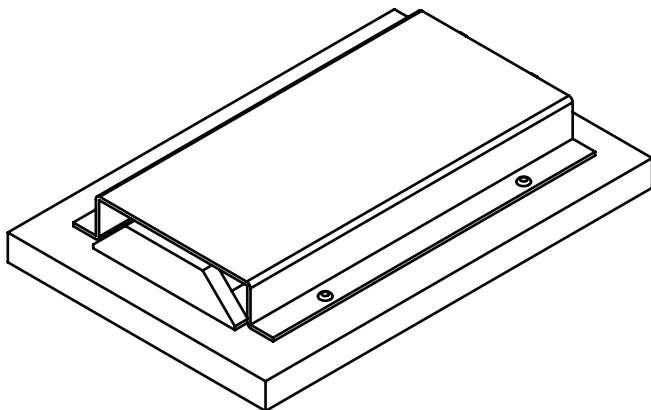
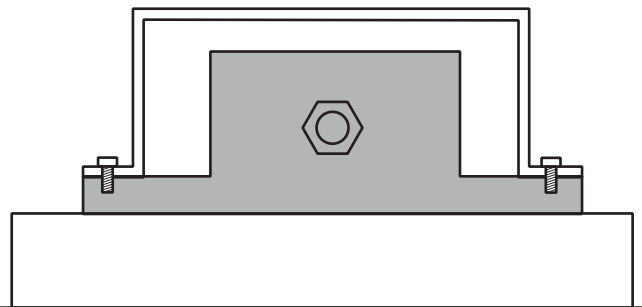
**Pg 3 Final Part Dimensions & calculations**

pg. 1/3

☐ Mounting past the bearing frame

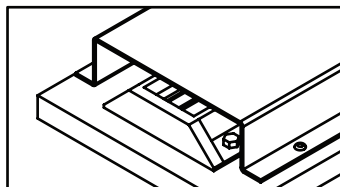


☐ Mounting on the bearing frame

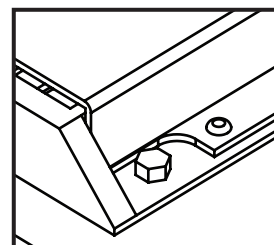


If mounting past the bearing frame be careful not to oversize the guard as the gaps between guard and bearing might be too large. See guarding standard

ANSI B11.19 -table E.3 for reference



Ex. This guard is too large.



If mounting directly onto frame: Holes will need to be cut to accomodate bolts. Do not mount on top of the plastic guard, as you won't be able to tighten the takeup frame properly.

## Contact Info:

Company Name \_\_\_\_\_

Phone \_\_\_\_\_

Name \_\_\_\_\_

Email \_\_\_\_\_



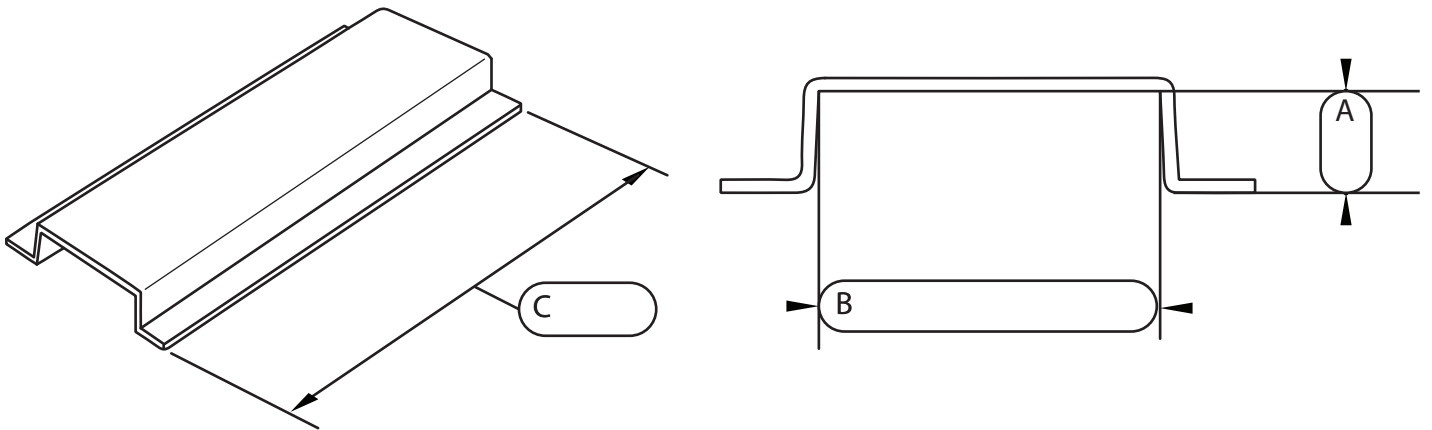
Machine Guard & Cover Co.

888-482-7371  
machineguard.com  
office@machineguard.com

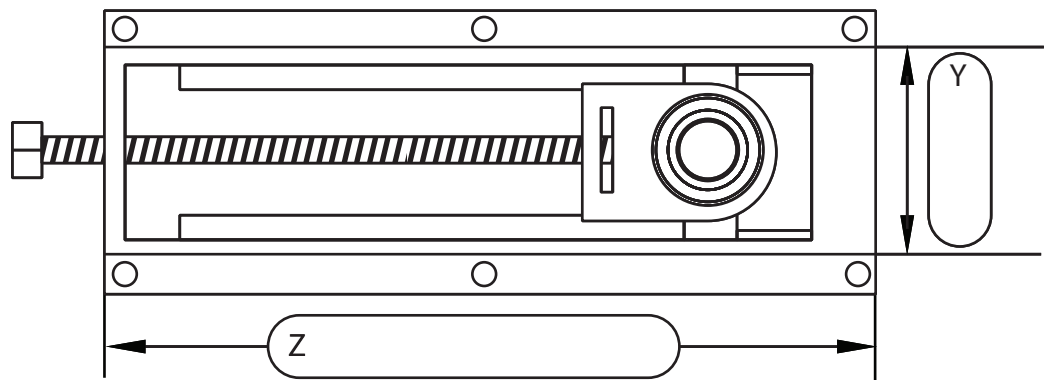
# Takeup Bearing Covers

## -Measuring for mounting on bearing frame

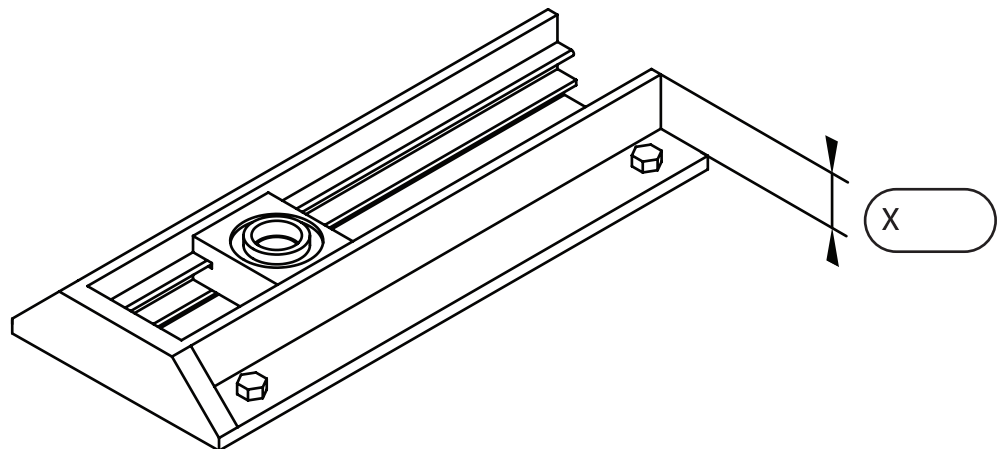
pg. 2/3



$A = X + T$   
 $B = Y + T$   
 $C = Z + T$   
Tolerance(T) =  
A =  
B =  
C =



Machine Guard  
suggests adding  
Tolerance  
(gap between guard  
and machine)  
of at least 1/2"  
for larger parts add  
more.



## Contact Info:

Company Name \_\_\_\_\_

Phone \_\_\_\_\_

Name \_\_\_\_\_

Email \_\_\_\_\_



Machine Guard & Cover Co.

888-482-7371

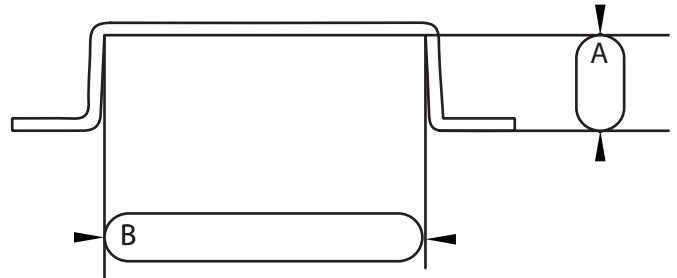
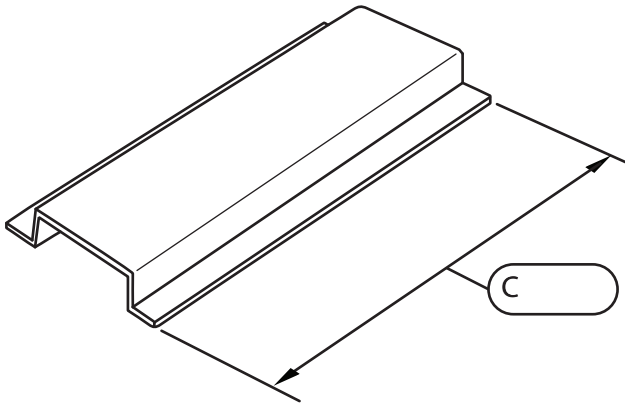
machineguard.com

office@machineguard.com

# Takeup Bearing Covers

## -Measuring for mounting past the bearing frame

pg. 3/3

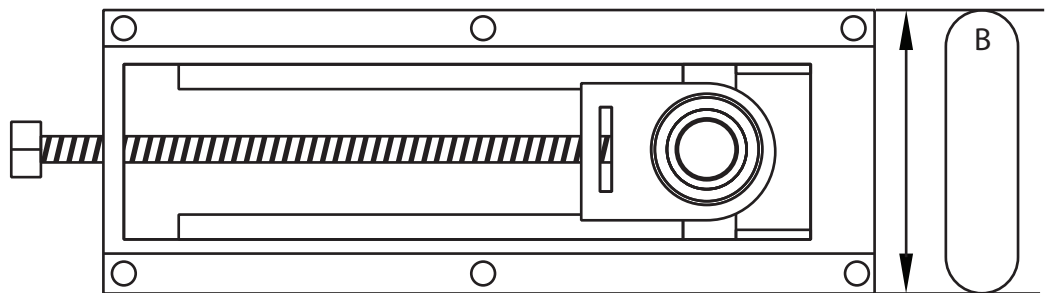


A =

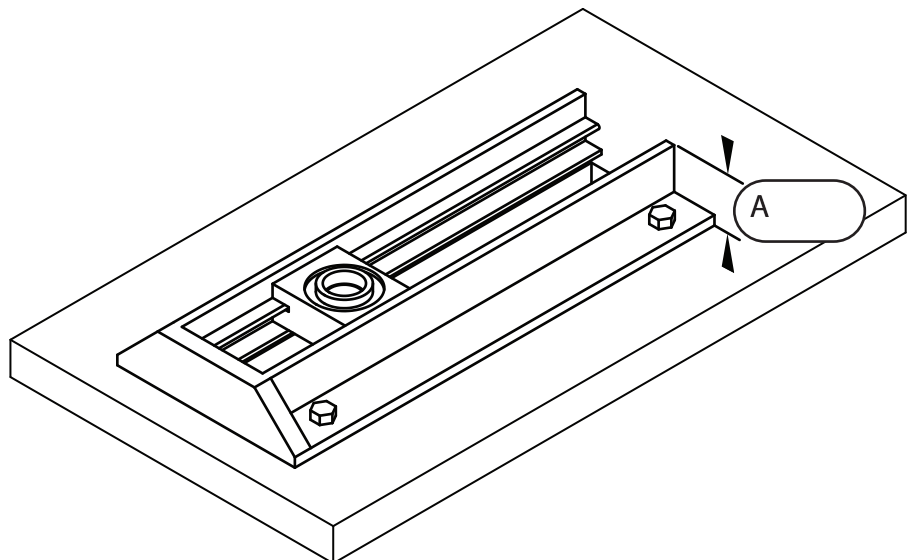
B =

C =

Tolerance(T) =



Machine Guard suggests adding Tolerance (gap between guard and machine) of at least 1/2" for larger parts add more.



## Contact Info:

Company Name \_\_\_\_\_

Phone \_\_\_\_\_

Name \_\_\_\_\_

Email \_\_\_\_\_