



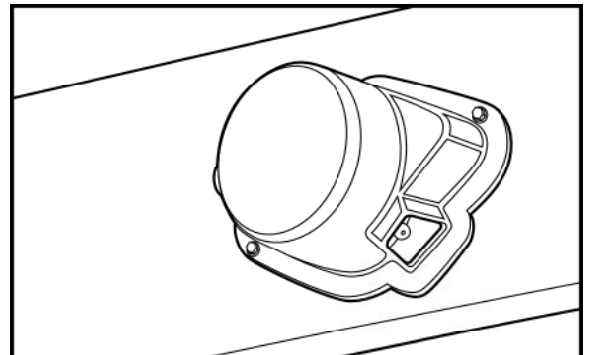
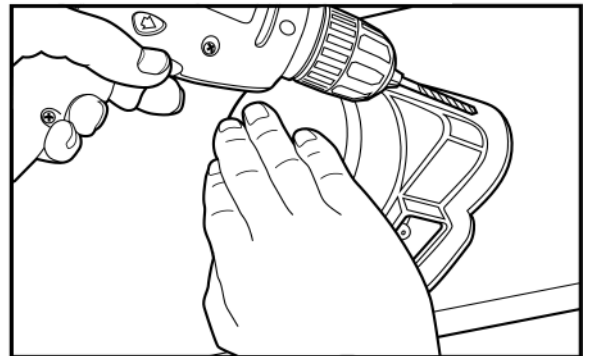
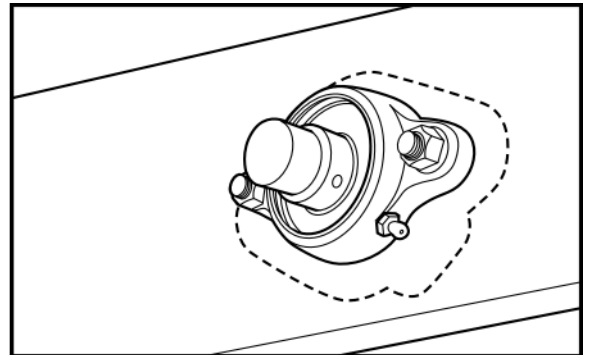
Machine Guard & Cover Co.

We've Got You Covered!

Flanged Bearing Cover Installation Guide

Bearing covers should cover the entire bearing. Attachment methods differ based on the mounting structure available. Machine Guard & Cover cannot be responsible for a bearing cover installed improperly.

1. Test fit your cover for adequate clearances. The flanges on the cover can be trimmed away as needed to avoid obstructions. If your bearing has a grease fitting you may drill or cut the cover for access. Covers may be installed using either self-tapping screws or machine screws.
2. To install with the optional supplied self-tapping screws, drill a pilot hole through the cover and structure with a 1/8" to 7/32" drill bit. Use the first hole to attach the cover to the structure.
3. To use the optional supplied machine screws, use a drill bit to make a pilot hole in the cover, and a pilot mark in the structure. Expand the cover hole with a 1/4" drill bit. Drill and tap a structure hole for 1/4"-20 threads. Use the first hole to attach the cover to the structure.
4. Drill the second hole following steps 2 or 3 as appropriate. Remove the cover if you need to drill and tap the structure. Re-install the cover to the mounting structure. Fasten all screws.



www.machineguard.com
office@machineguard.com
Fax: 877-482-7313



Machine Guard & Cover Co.

6187 136th Avenue
Holland, MI 49424
888 - 482-7371