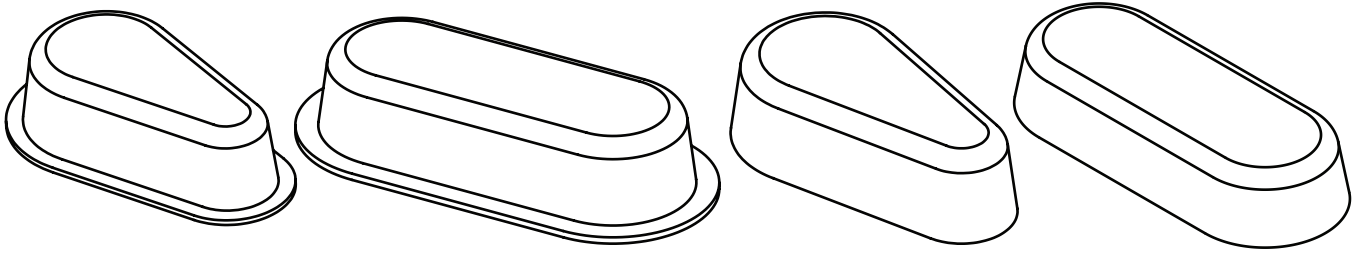




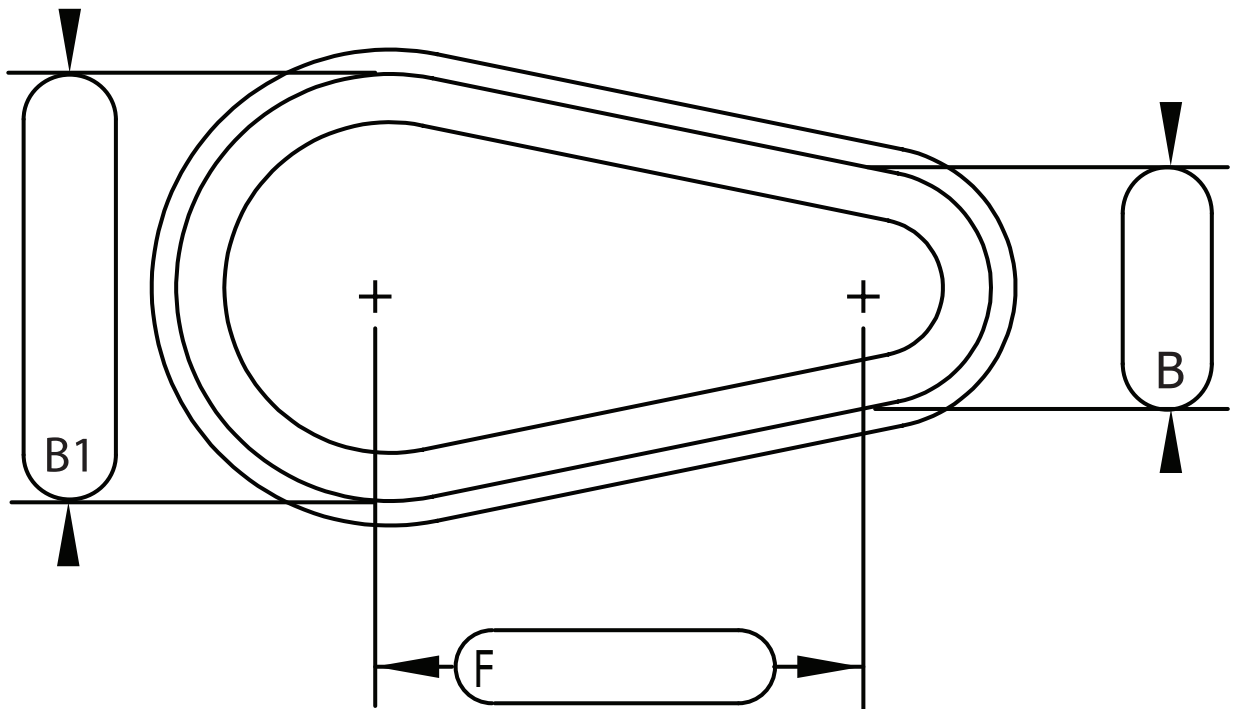
Machine Guard & Cover Co.

# Sizing from a Guard- Standard/Tapered

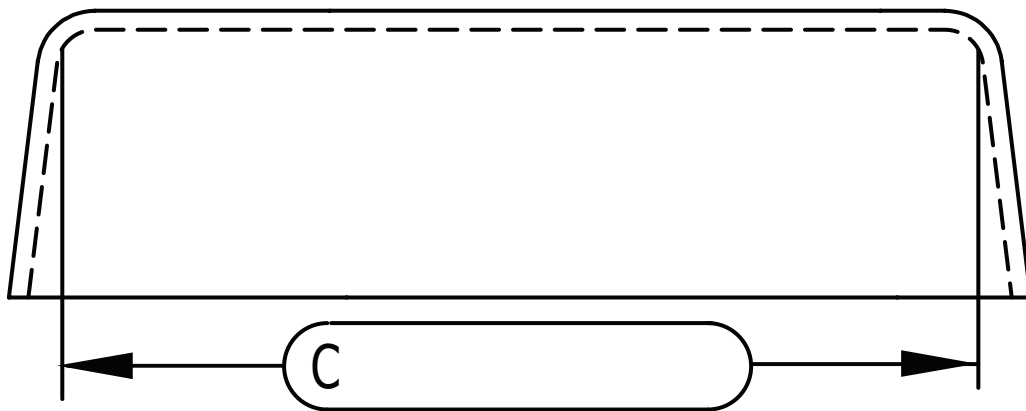
888-482-7371  
machineguard.com  
office@machineguard.com



**START HERE: Step 1:**



**Step 2:**



**Please send to: [office@machineguard.com](mailto:office@machineguard.com)**

Company Name \_\_\_\_\_ Phone \_\_\_\_\_

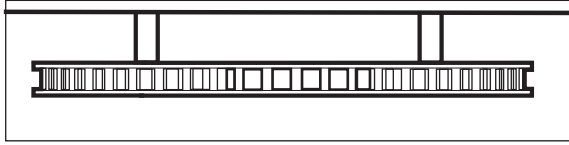
Name \_\_\_\_\_ Email \_\_\_\_\_



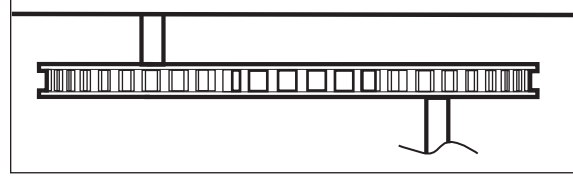
# Chain Drive Sizing- Standard/Tapered

**START HERE: Step 1:** Shaft variations: check one

-Shafts on the same side



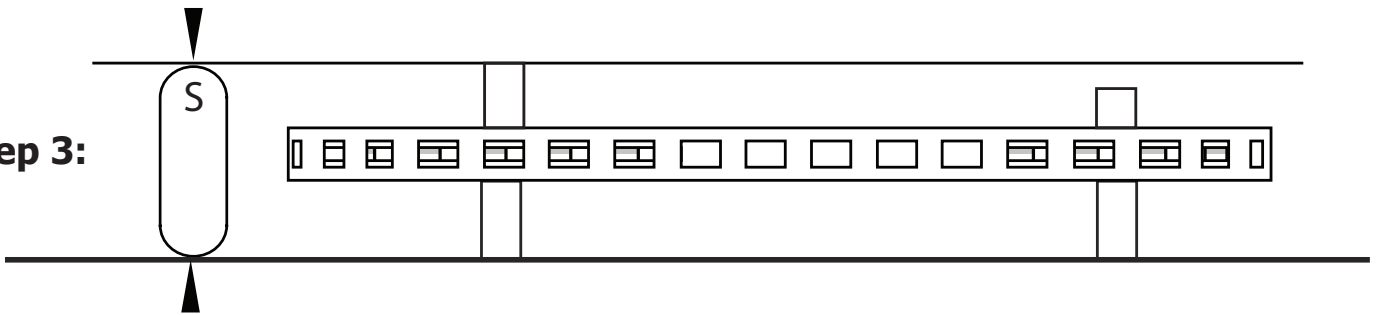
-Shafts on the opposite sides



**Step 2:** Choose the gap size between the guard and machine:

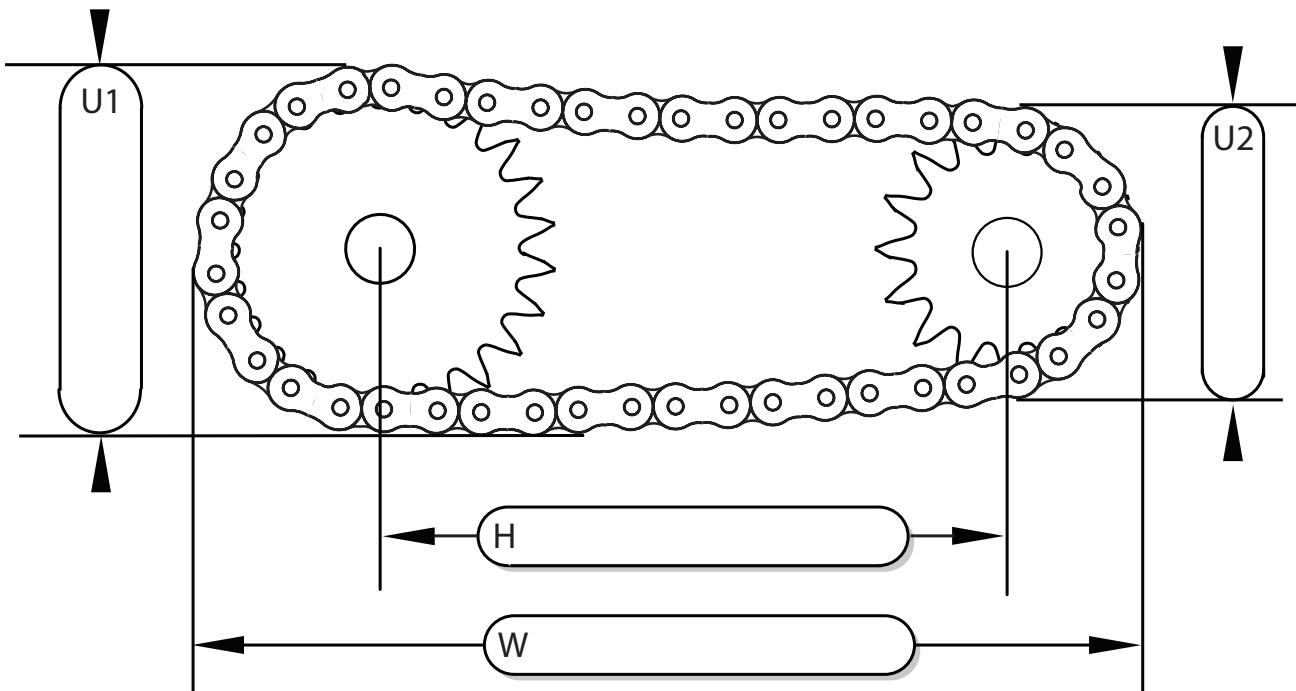
-Standard gap of 1/2" (min. recommended)  -custom gap: \_\_\_\_\_

**Step 3:**



**Step 4:**

! To measure with chain make sure to account for chain sag by adding additional tolerance to measurement U and U1



Company Name \_\_\_\_\_ Phone \_\_\_\_\_

Name \_\_\_\_\_ Email \_\_\_\_\_

**Please send to:**  
**office@machineguard.com**



Machine Guard & Cover Co.



888-482-7371

machineguard.com

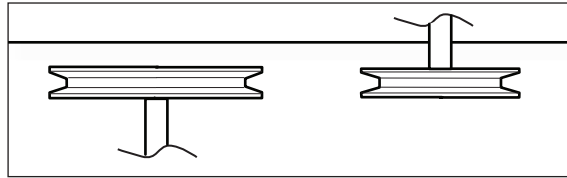
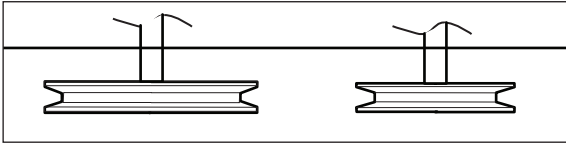
office@machineguard.com

# Belt Drive Sizing- Standard/Tapered

**START HERE: Step 1:** Shaft variations: check one

-Shafts on the same side

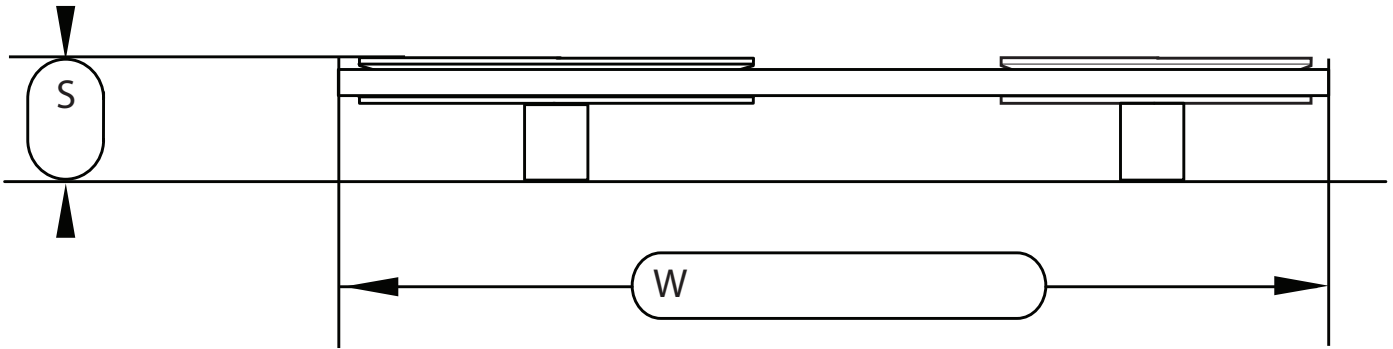
-Shafts on the opposite sides



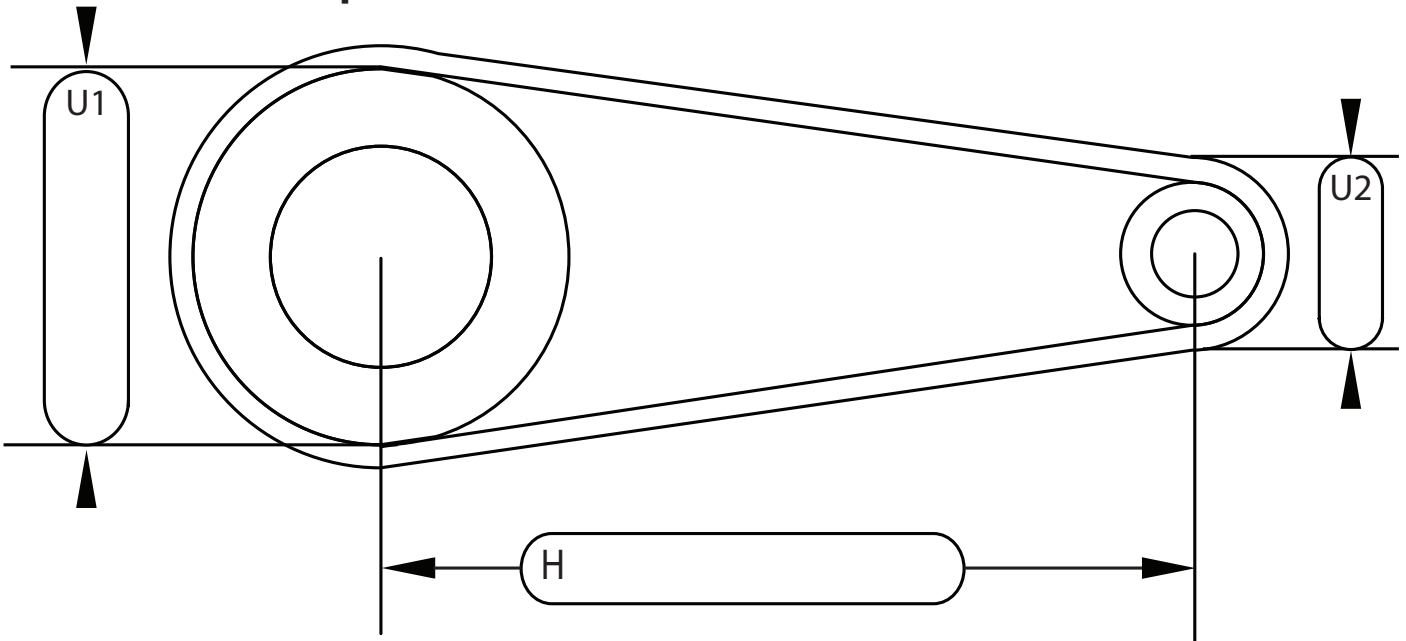
**Step 2:** Choose the gap size between the guard and machine:

-Standard gap of 1/2" (min. recommended)  -custom gap: \_\_\_\_\_

**Step 3:**



**Step 4:**



Company Name \_\_\_\_\_ Phone \_\_\_\_\_

Name \_\_\_\_\_ Email \_\_\_\_\_

**Please send to:**  
**office@machineguard.com**