



Machine Guard & Cover Co.

888-482-7371
machineguard.com
office@machineguard.com

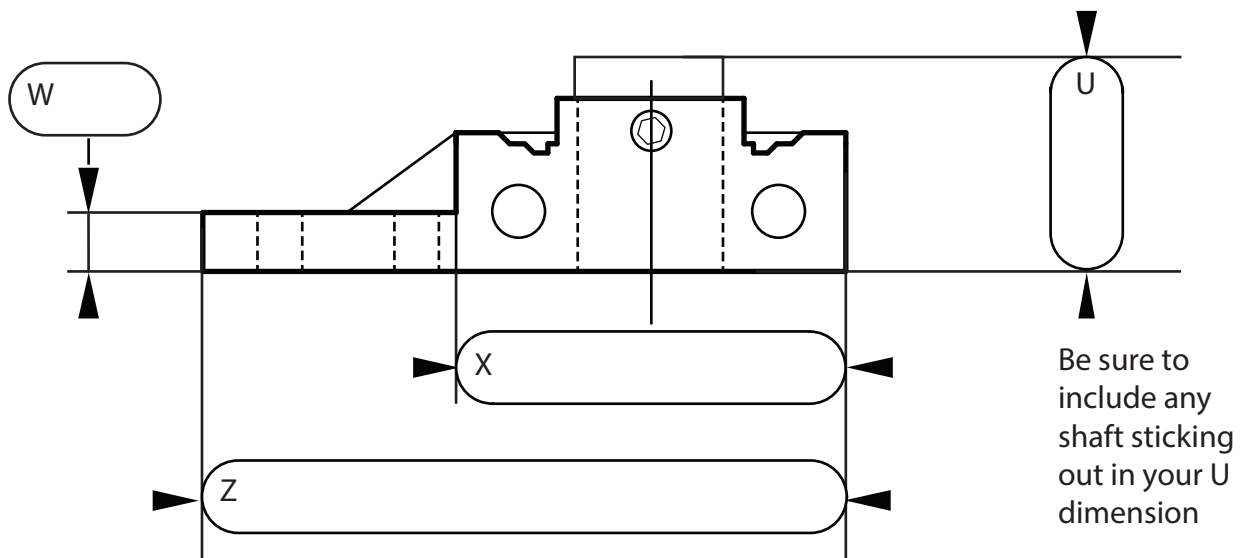
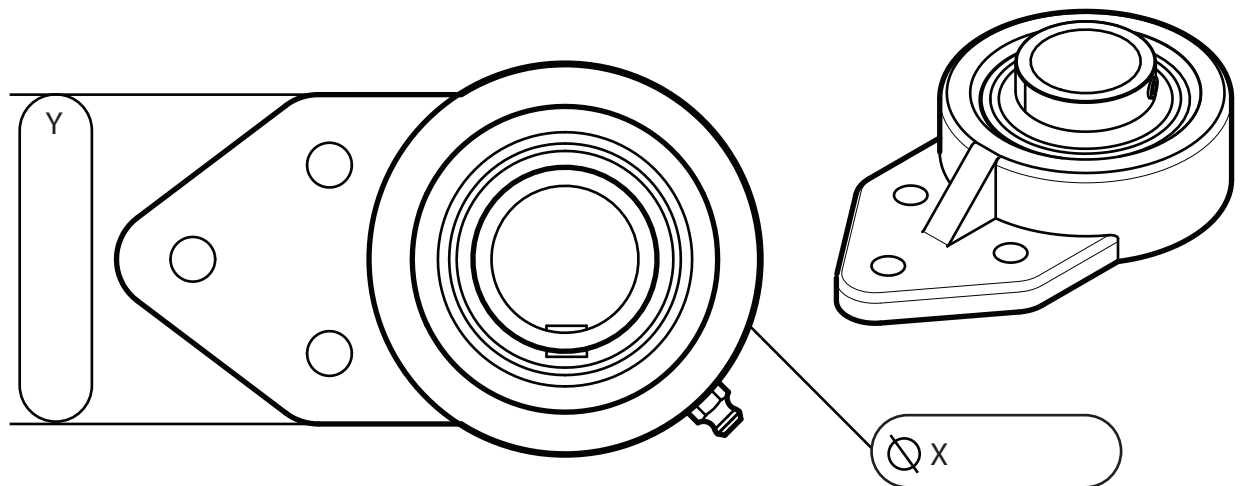
3-Bolt Flange Bearing Covers

Pg 1 Measuring from a bearing

Pg 2 Measuring from a guard

Pg 3 Final Part Dimensions & calculations

pg. 1/3



To calculate final part dimensions with your measurements see page 3

Contact Info:

Company Name _____

Phone _____

Name _____

Email _____

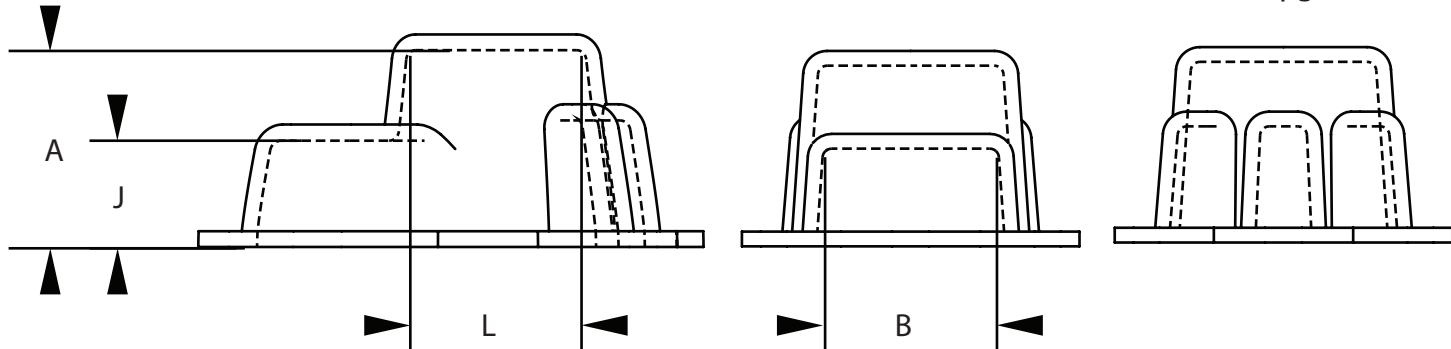


Machine Guard & Cover Co.

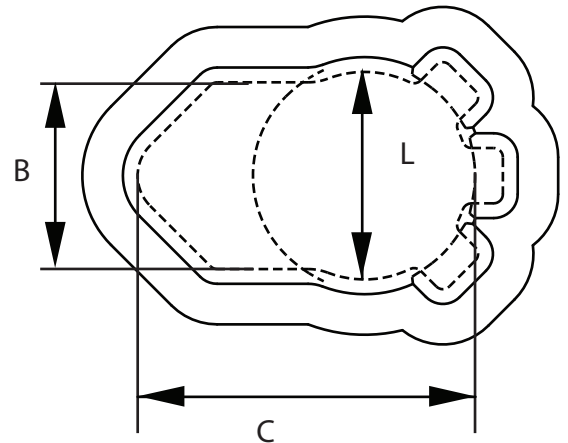
888-482-7371
machineguard.com
office@machineguard.com

3 Bolt Flange Bearing Covers

pg. 2/3



All measurements should be taken from the internal side of the guard to prevent unnecessary oversizing.



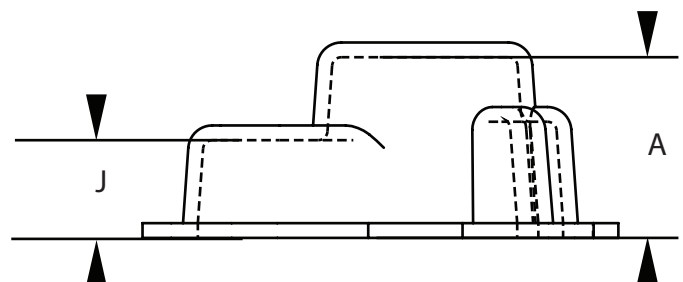
A =

J =

L =

B =

C =



To calculate final part dimensions with your measurements see page 3

Contact Info:

Company Name _____

Phone _____

Name _____

Email _____

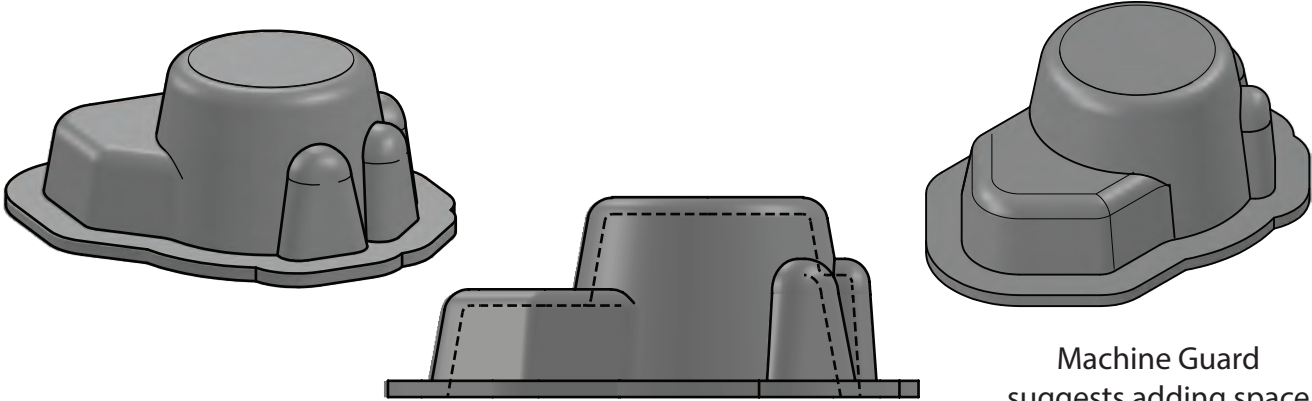


Machine Guard & Cover Co.

888-482-7371
machineguard.com
office@machineguard.com

3 Bolt Flange Bearing Covers

pg. 3/3



Machine Guard
suggests adding space
(S) (as in the gap
between guard and
machine)
of at least 1/2"
for larger parts add
more.

A	J	L	B	C	S
U	W	X	Y	Z	

$S + U = A$

$S + W = J$

$X + S = L$

$S + Y = B$

$Z + S = C$

Contact Info:

Company Name _____ Phone _____

Name _____ Email _____