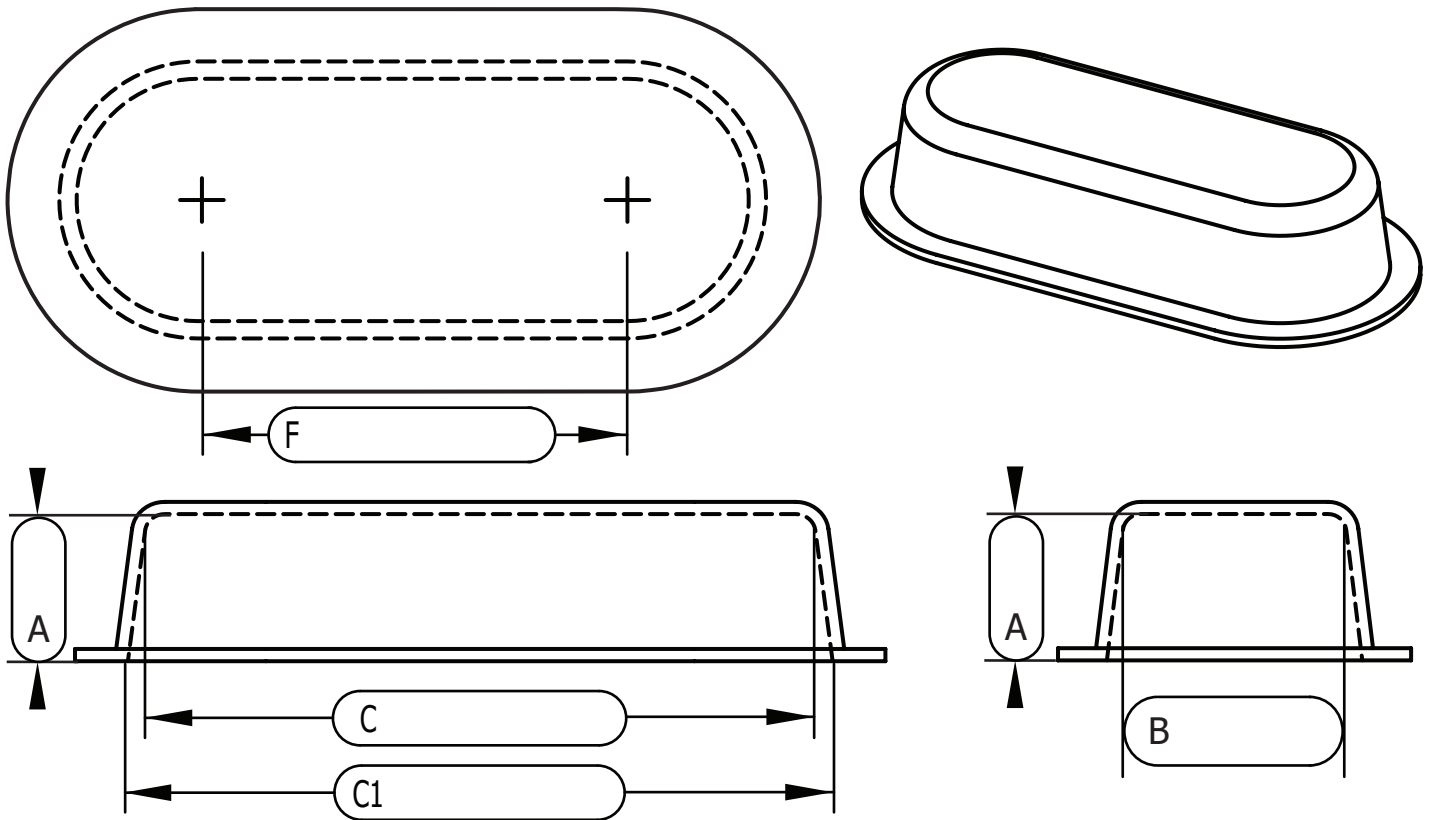




Standard Flanged Guards

Final Part Dimensions

- for sizing a guard to a chain drive see page 2
- for sizing a belt drive see page 3
- for sizing an existing guard stay on this page



Machine Guard suggests adding Tolerance (gap between guard and machine) of at least 1/2" for larger parts add more.

$A = S + \text{Tolerance}$	$B = U + \text{Tolerance}$	A =
		B =
		C =
$C = W + \text{Tolerance}$	$F \geq H + \text{Tolerance}$	F =
		Tolerance =

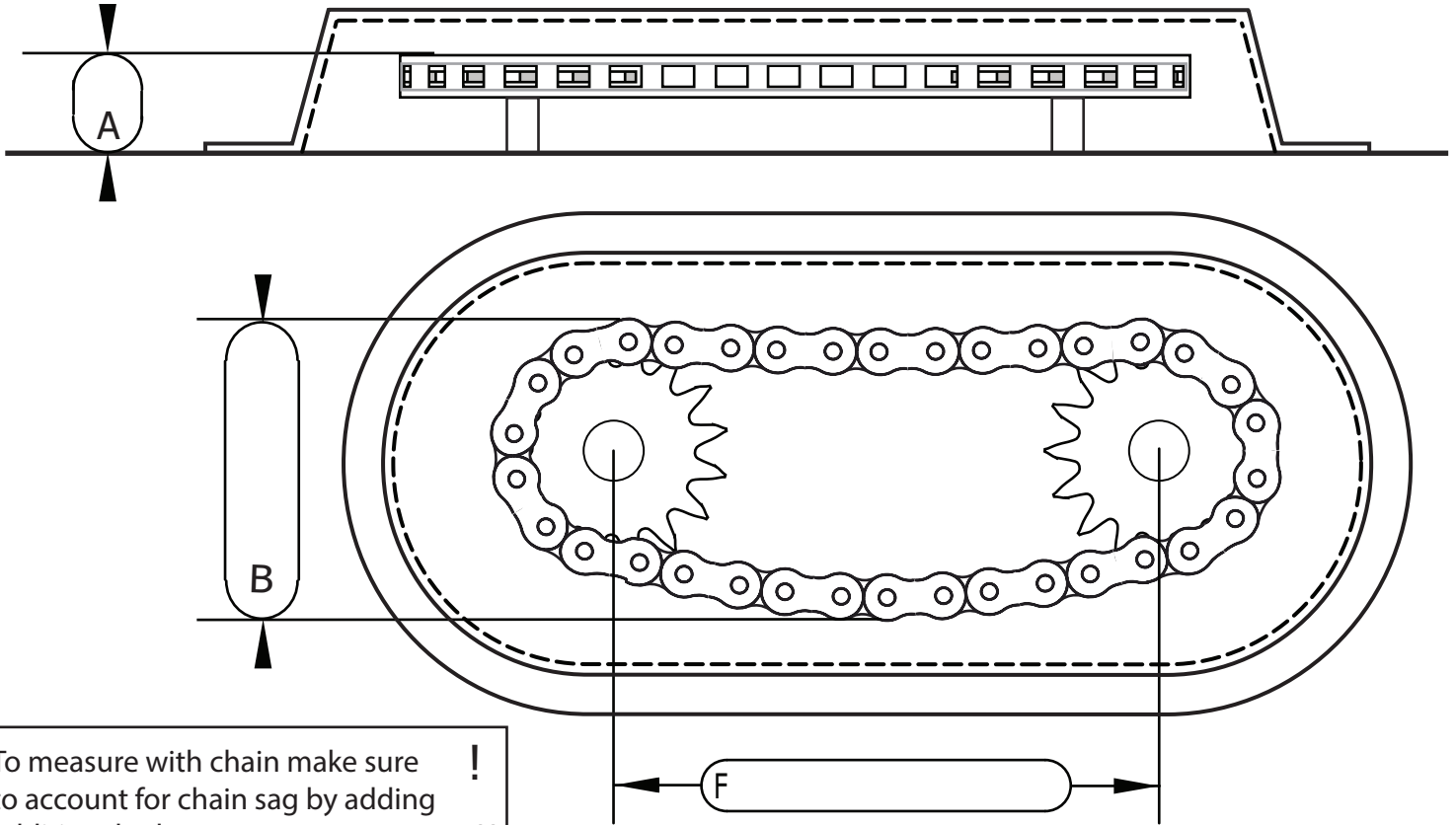
Contact Info:

Company Name _____ Phone _____

Name _____ Email _____



Chain Drive Sizing- Standard



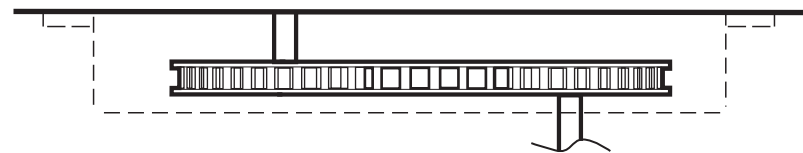
To measure with chain make sure to account for chain sag by adding additional tolerance to measurement U !

Shaft variations: check one

-Shafts on the same side



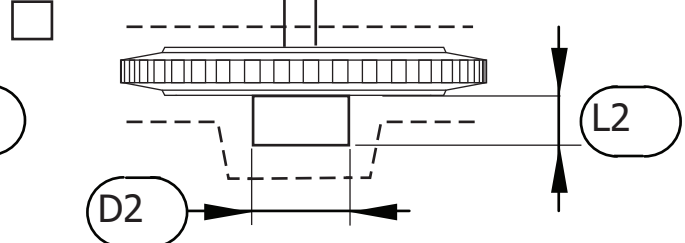
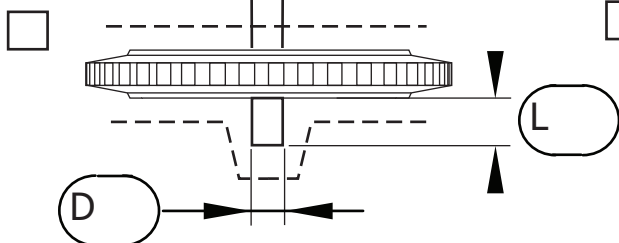
-Shafts on the opposite sides



Additional measurements may be needed to be added to measurement A if you have shafts or hubs that extend past the sprockets.

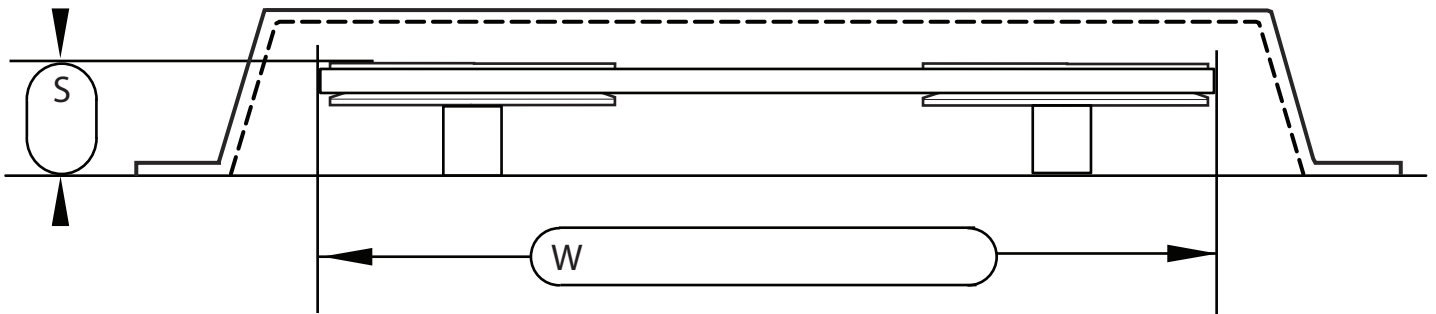
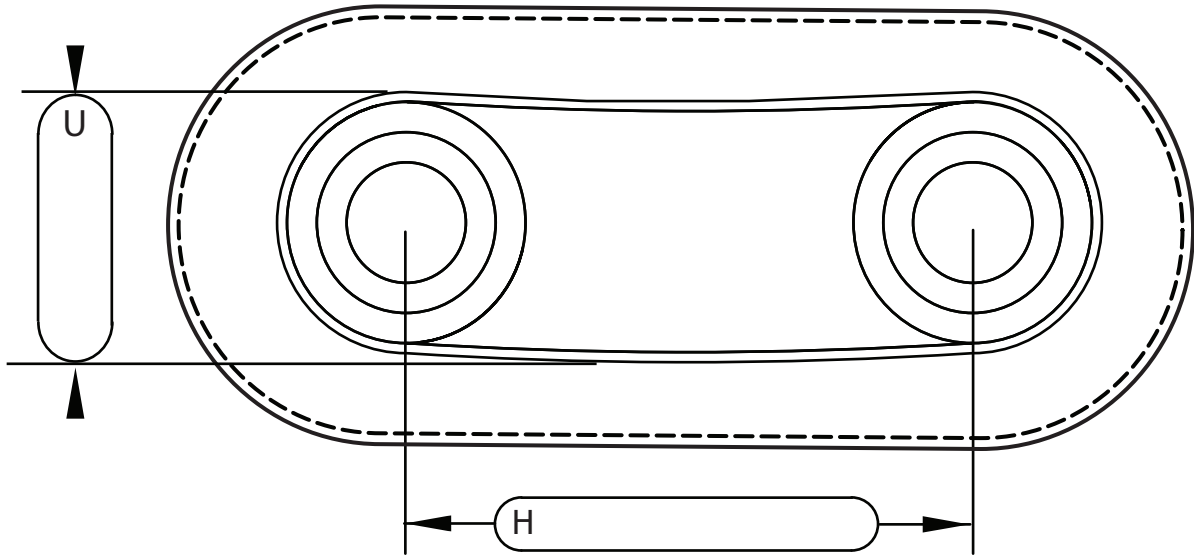
Long shaft:

Outside hub:





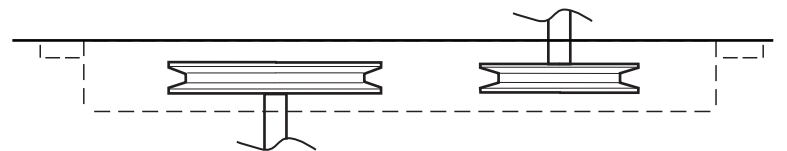
Belt Drive Sizing- Standard



-Shafts on the same side

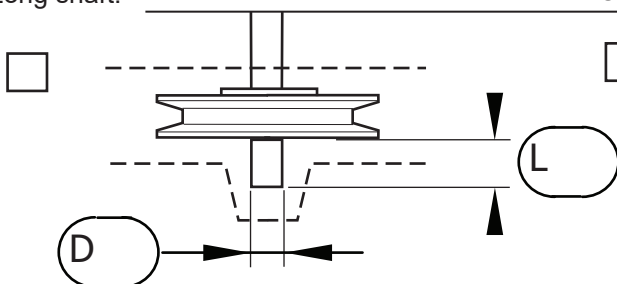


-Shafts on the opposite sides



Additional measurements may be needed to be added to measurement A if you have shafts or hubs that extend past the sheaves.

Long shaft:



Outside hub:

