



# Machine Guard & Cover Co.

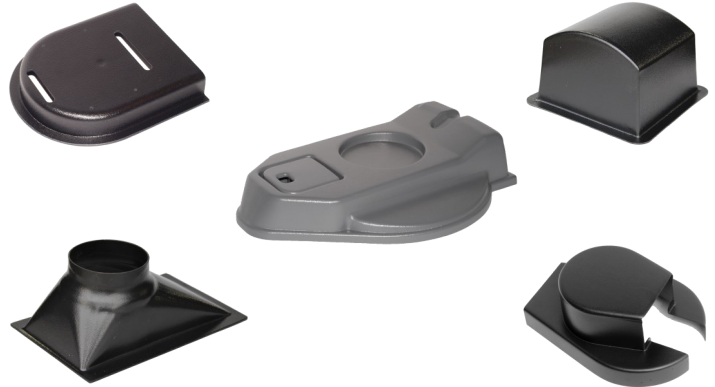
6187 136<sup>th</sup> Avenue, Holland, MI 49424  
888.482.7371 www.machineguard.com

## Thermoforming

Most of the parts manufactured by Machine Guard & Cover Co. are made using the thermoforming process.

Thermoformed parts can be molded into curves and slopes which are not possible with a fabricated part. All molds used by Machine Guard & Cover Co. are designed and tooled in house.

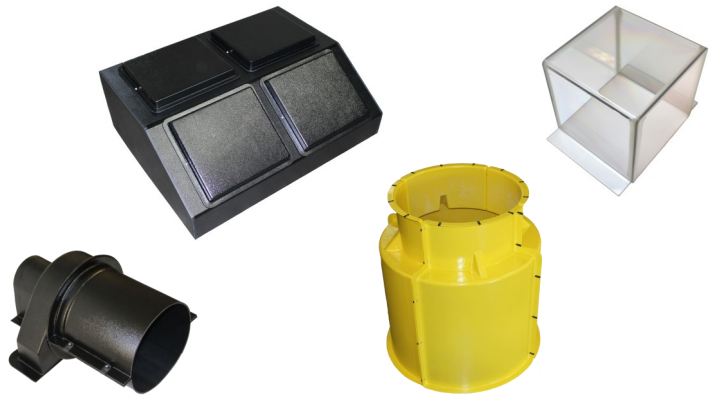
The thermoforming process is very cost effective compared to the injection molding process when short run quantities are needed.



## Fabrication

Large guards, tall guards, access panels and other options may be manufactured by fabrication instead of thermoforming. Guards that require no draft are manufactured using the fabrication process.

The final guard assembly can be completed by gluing or using physical fasteners. These are preferred in situations where the guard is occasionally removed for maintenance purposes, inspection or when access panels are required.



## Slot-and-Tab Fabrication

This custom HDPE plastic slot-and-tab fabricated guard was manufactured for a cell used in an electro-chemical process in the chlorine generating system by Scienco/FAST, a subsidiary of Bio-Microbics.

HDPE was used for its superior chemical resistance and requires slot-and-tab fabrication because adhesives are ineffective on this material. This project also used Nylon fasteners due to corrosion concerns with standard fasteners.



Products manufactured by:



# Machine Guard & Cover Co.

6187 136<sup>th</sup> Avenue, Holland, MI 49424  
888.482.7371 www.machineguard.com

We've Got You Covered  MADE IN THE USA



# Machine Guard & Cover Co.

6187 136<sup>th</sup> Avenue, Holland, MI 49424  
888.482.7371 www.machineguard.com

## Expanded Metal Mesh

The addition of expanded metal mesh to a guard can provide visibility to the moving components while maintaining the safety of an installed guard.



## Fabricated Boxes

An inexpensive solution for point guarding is the fabricated box family of guards. Fabricated coupling covers are designed to be a drop in place guarding solution. Metal detectable blue ABS may also be used to create fabricated boxes for use in the food and pharmaceutical industries where a metal guard would traditionally be used.

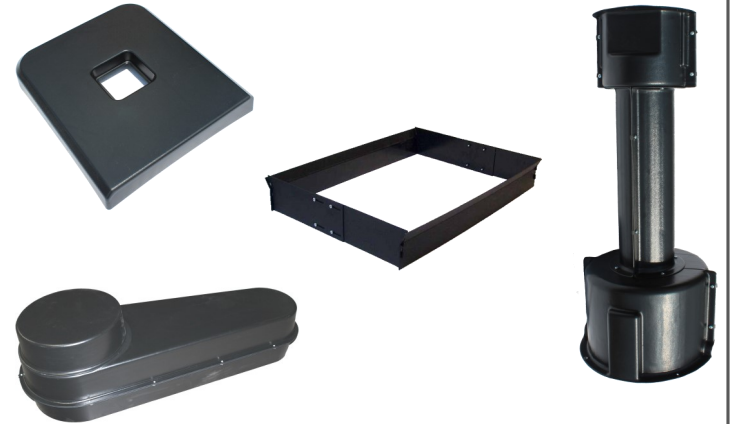


## Unique Guards

Individualized guarding solutions can be created for unique applications.

Multiple standard guards can be combined to create a larger assembly. Stacked round flanged covers, pillow block bearing covers with shaft extensions and guards with round flanged cover additions are popular semi-custom parts.

Company names and logos can be molded directly into the guard for further customization.



## Materials

Guards are available in the following materials and thicknesses.

	3/16" ABS
	1/8" ABS
	1/8" Metal Detectable ABS
	1/4" ABS
	3/16" transparent PETG
	1/4" Kydex T

## Product Features

- Plastic guards:
- absorb sound
  - are lightweight
  - can be sterilized
  - are easily modified
  - will never rust

Products manufactured by:



# Machine Guard & Cover Co.

6187 136<sup>th</sup> Avenue, Holland, MI 49424  
888.482.7371 www.machineguard.com

We've Got You Covered MADE IN THE USA