



**Machine Guard & Cover Co.**

6187 136<sup>th</sup> Avenue, Holland, MI 49424

888.482.7371 www.machineguard.com

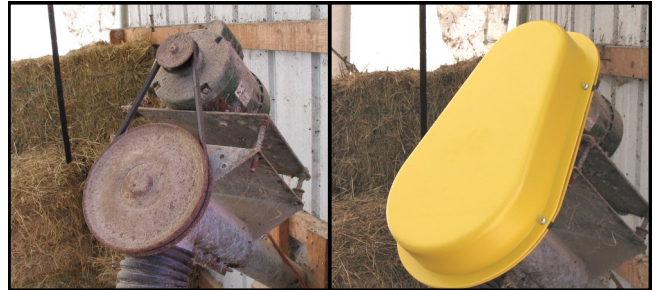
### Standard and Tapered Guards

Designed to cover industrial belt and sheave or chain and sprocket drive systems.

- Available in: ABS, PETG and Kydex T
- Flanged, Unflanged, Safety Captured Fasteners, expanded mesh and custom trims are available

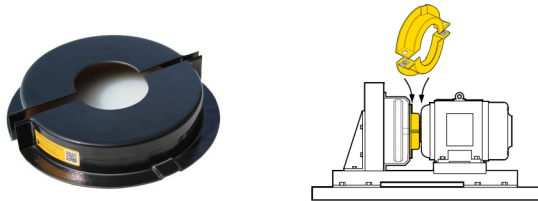


This grain auger belt and sheaves are now protected by a Tapered Guard with Safety Captured Fasteners.

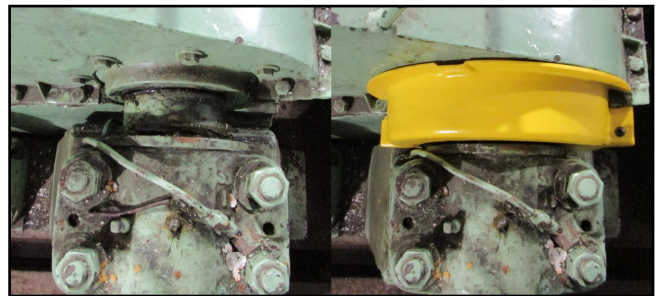


### Split Round Guards

Intended to fill the gap between components such as a pump and motor, the Split Round Guard family protects this potentially small but hazardous location.



This before and after image shows an installed Split Round Guard point guarding the gap between a bushing (at bottom) and a gearbox (at top).

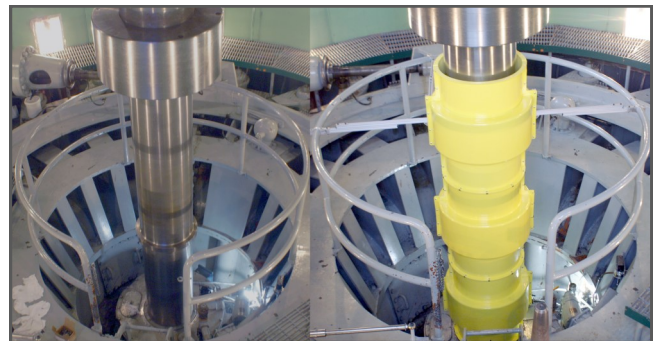


### Shaft Covers

These two-part shaft covers feature a sturdy flange mounting point, an opening for a grease fitting and a long extension secured with flanges and fasteners to fully cover the exposed shaft.



This custom shaft cover protects a turbine shaft 18" in diameter and over 10' tall.



Products manufactured by:



**Machine Guard & Cover Co.**

6187 136<sup>th</sup> Avenue, Holland, MI 49424

888.482.7371 www.machineguard.com

We've Got You Covered



MGC Combined Line Card 2018.03.30



## Machine Guard & Cover Co.

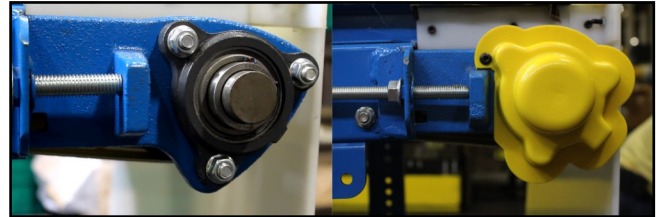
6187 136<sup>th</sup> Avenue, Holland, MI 49424

888.482.7371 www.machineguard.com

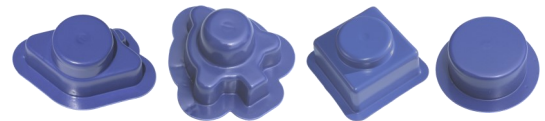
### Bearing Covers

Bearing Covers are used to physically guard 2-Bolt, 3-Bolt, 3-Bolt Flange Bracket Bearings, 4-Bolt, 4-Bolt Flange Bracket Bearings, Pillow Blocks and shaft ends.

A 3-bolt bearing cover protects the bearing at the end of a conveyor belt.



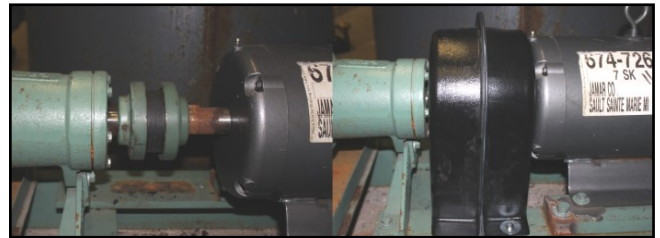
Metal detectable blue ABS plastic is an option for the lightweight 2-Bolt, 3-Bolt, 4-Bolt and Round Bearing Cover families. This new material is an excellent alternative in the food and pharmaceutical industries where traditionally, an all metal guard would be required.



### Coupling Covers

One-piece, kit and simple fabricated box covers can provide safety in the workplace for this common hazard location.

A coupling cover protects the coupling between this motor and pump.



### Custom Guards

Machine Guard & Cover can manufacture a custom guard for your specific application using thermoforming or custom fabrication. Expanded mesh, custom flanges, lettering and logos can further customize your parts.



### Materials

Guards are available in the following materials and thicknesses.

				3/16" ABS
				1/8" ABS
				1/8" Metal Detectable ABS
				1/8", 3/16", 1/4" transparent PETG
				1/4" Kydex T

### Product Features

- Plastic guards:
- absorb sound
  - are lightweight
  - can be sterilized
  - are easily modified
  - will never rust

